

 **ARBORITE<sup>®</sup>**

# Solid Surface



## About Arborite® Solid Surface

Arborite® Solid Surface provides incredible opportunities to express true freedom in design.

This unique product offer delivers more benefits, options and flexibility than any other surface material. Unique colour, sheet size and a broad range of integrated sinks being just some of its key features.

The key virtues of Arborite® Solid Surface:

- Ultra Hygienic to any demanding environment
- Repairable and Renewable on site
- Inconspicuous joins giving you a seamless look
- Thermoformable properties allows curved designs
- Easy to care for and maintain
- Extensive range of sinks and bowls
- Coordinate it with Arborite® Panels & Doors

Arborite is marketed nationally by Wilsonart® Australia.



## Arborite Solid Surface is made for your home.

Whether your style is minimal and elegant or bright and bold, Arborite® Solid Surface offers something for everyone.

Arborite® Solid Surface has been developed with you the designer in mind – giving you the opportunity to select your colour and combine it with one or more of Arborite's range of decorative materials. From high pressure laminates to melamine decorative panels to the stunning vinyl door range; designing with Arborite® gives you access to the vast range of décors and finishes.

Resistant to stains, moisture and bacteria – Arborite® Solid Surface delivers the functionality that your kitchen or bathroom desires. Giving you a modern and long lasting solution without comprising look and durability.

Select your beautiful new Arborite® decor, and integrate it with one of our versatile solid surface sinks and bowls.

### DURABLE

Arborite® Solid Surface is perfect for high traffic areas like kitchen benchtops and bathroom vanity tops.

### HYGIENIC

Non porous and prevents bacteria buildup. Ideal for busy families who want high hygienic and wear protection.

### REPAIRABLE

Arborite® Solid Surface is a renewable surface that allows for onsite repair with minimal fuss.

### VERSATILE

Design versatility to curve and mould in a continual piece.

### SHAPE

An extensive range of modern sinks and bowls that can be easily integrated with your benchtop and vanity top.

### COLOUR

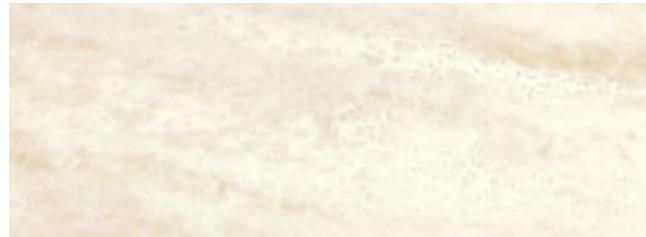
Stocked and readily available in a broad range of popular designs and colours to suit your project.



# Solid Surface Collection

Arborite® Solid Surface is available in a standard sheet size 3660mm x 760mm x 12.3mm.  
Solid White available in 930mm & 1520mm wide sheet.

## NATURAL



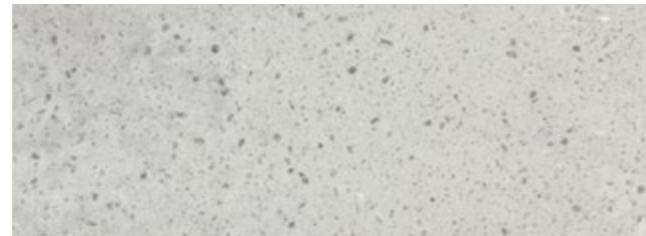
Sea Shell  
SS0009



Silver Ice  
SS013

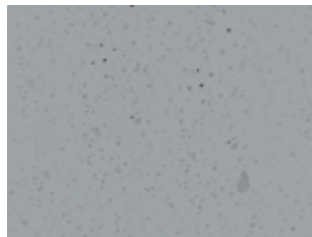


Sand Dunes  
SS015

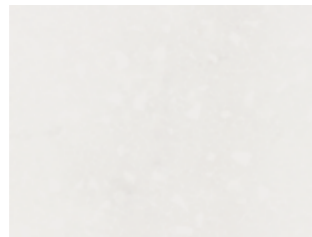


Cement  
SS016

## MINERAL



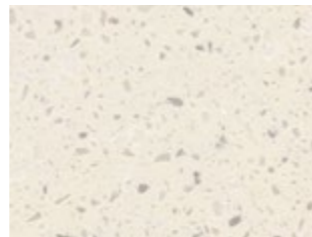
Gris Quartz  
SS4836



Bianco Quartz  
SS514



Nieve Quartz  
SS4854

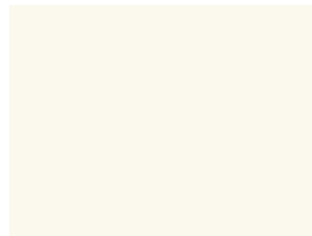


Crema Quartz  
SS4866

## SOLID



Solid White  
SSW0131



Pearl White  
SSW0105



Fashion Grey  
SSWD381



North Sea\*  
SSWD90



Regimental Red\*  
SSWD12K



Black\*  
SSW1595

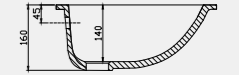
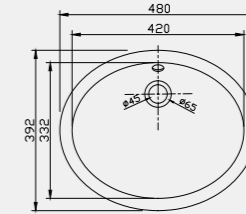
Visit [www.arborite.com.au](http://www.arborite.com.au) to request your samples

The colour reproduction on our brochure is subject to the accuracy of printing limitations. Please review actual samples before ordering.  
Darker colours may show every day wear and tear, including light scratching, more readily in high use horizontal applications (i.e., benchtop). To ensure we meet your expectations, customers should be aware of the extra care needed. Scratching is not considered a product defect and hence not covered by the warranty. These colours are marked with an asterisk (\*).

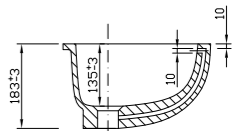
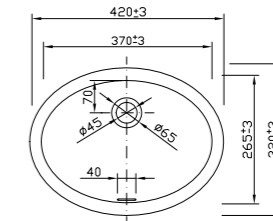
# Shape

## BATHROOM SINKS

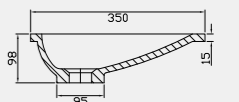
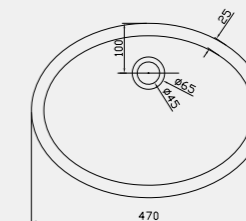
SSS100  
External Dimensions  
480 x 392 x 160



SSS106A  
External Dimensions  
425 x 320 x 172

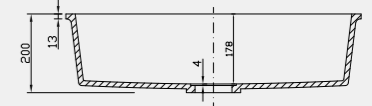
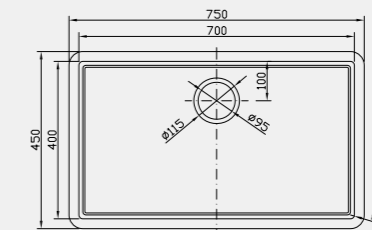


SSS103  
External Dimensions  
470 x 350 x 98

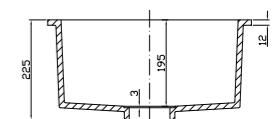
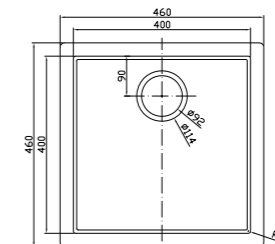


## KITCHEN SINKS

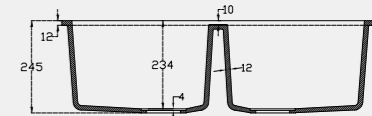
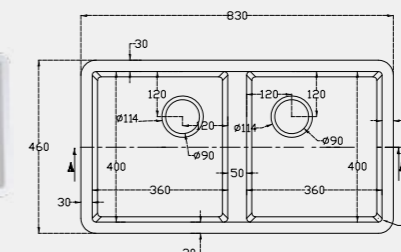
SSS116  
External Dimensions  
750 x 450 x 190



SSS120  
External Dimensions  
460 x 460 x 225



SSS210  
External Dimensions  
830 x 460 x 245



\*Waste not included.

# Finishes

There are four types of finishes that can be supplied on your Arborite® Solid Surface by your fabricator/installer. The following simple definitions should assist with key items to consider when choosing a finish and necessary maintenance.

**Matte:** Recommended standard finish especially in high traffic areas with low or no sheen and normally requires the least maintenance.

**Satin:** Slightly higher sheen that may require more attention, depending on traffic and use.

**Semi-Gloss:** Higher sheen with some reflection requires special consumer instructions, not suggested for a high traffic or high use areas, may require a certified fabricator to maintain, service charge may apply.

**Gloss:** Recommended for vertical surface only, requires a certified fabricator to maintain finish, service charges may apply.

Darker patterns may need more frequent attention to maintain a uniform finish. Over time with use and general cleaning the surface finish will appear to change. We recommend periodically cleaning the entire surface, following the guidelines for removing stubborn residue, to restore or maintain the original finish.

# Performance Properties

PROPERTY	TYPICAL RESULT	TEST
Tensile Strength	6,000 psi	ASTM-D-638
Tensile Modulus	1,500,000 psi	ASTM-D-638
Flexural Strength	10,000 psi	ASTM-D-790
Flexural Modulus	1,200,000 psi	ASTM-D-790
Hardness	>85	Rockwell “M” Scale
Thermal Expansion	3.02 x 10 <sup>-5</sup> in./ in. /°C	ASTM-D-696
Gloss (60° Gardner)	5-75 (matte-highly polished)	ANSI-Z124
Light Resistance (Xenon Arc)	No effect	NEMA LD 3-2000 Method 3.3
Stain Resistance: Sheets	Pass	ANSI-Z124.3 & Z124.6
Fungus and Bacteria Resistance	Does not support microbial growth	ASTM-G-21 & G-22
Boiling Water Resistance	No visible change	NEMA LD 3-2000 Method 3.5
High Temperature Resistance	No change	NEMA LD 3-2000 Method 3.6
Izod Impact (Notched Specimen)	0.28ft.-lbs./in. of notch	ASTM-D-256 (Method A)
Ball Impact Resistance: Sheets	6mm sheet : 36” w/ 1/2lb, no failure 12mm sheet : 144” w/ ½ lb, no failure	NEMA LD 3-2000 Method 3.8
Weatherability	E*94<5 (1,000 hrs)	ASTM-G-155
Specific Gravity	1.7	
Water Absorption	Long term 0.4% (6mm) 0.6% (12mm) 0.8% (19mm)	ASTM-D-570
Flammability	All colours (Class 1 and Class A)	ASTM-E-84, NFPA255 & UL723
Flame Spread Index	<25	
Smoke Developed Index	<25	

# Care & Maintenance

## GENERAL CLEANING

For day to day cleaning, warm soapy water or non-abrasive household cleaners such as glass cleaner or commercially available solid surface cleaners will remove most residues. Then rinse and towel dry the surface to prevent spotting especially in areas with hard water.

## REMOVING STUBBORN RESIDUE

Stubborn residue that will not come out with day to day cleaning methods requires a slightly stronger cleaner. The following suggestions will assist you to remove stubborn residue and refurbish the finish.

**Matte:** Apply an abrasive cleaner like Jiff® or Gumption® and a damp sponge, buff in a circular motion. Then rinse and towel dry.

**Satin:** Apply a mild abrasive cleaner such as Jiff® and a damp sponge, rub in a circular motion. Then rinse and towel dry. If additional blending is necessary, lightly buff with a gray (7448) Scotch-Brite™ pad then rinse and towel dry.

**Semi-Gloss:** Apply soapy water and with a white Scotch-Brite™ pad rub in a circular motion. Then rinse and towel dry.

**Gloss Finish:** This finish is limited to mild detergents or nonabrasive cleaners with a soft cloth.

## SIMPLE PRECAUTIONS

Although Arborite Solid Surface can be renewed or repaired if necessary by a professional fabricator, it’s best to try and avoid serious damage by following these few simple guidelines.

### Preventing Heat Damage

Although Arborite Solid Surface is heat resistant, common sense should be applied concerning exposure to direct heat. As with all types of benchtops use solid trivets with rubber tip feet or flame resistant heat mats when placing hot objects, heat producing appliances such as electric skillets, crock pots, etc. on the benchtop.

### Protecting the Surface

Avoid exposing the surface to harsh chemicals such as paint removers/thinners, acetone based cleaners, stove/drain cleaners, etc. If these come in contact with the surface, quickly wash off with water, using the appropriate safety measures to avoid injury.

Do not cut directly on the surface of your benchtop, always use a cutting board. Deeper cuts may require service of a professional fabricator at an added expense.

Do not stand or sit on the benchtop.

# Arborite 7 Year Warranty

The manufacturer warrants that Arborite Laminate, Arborite Panels, Arborite Doors and Arborite Solid Surface shall be free from defect for a period of 7 years from the date of manufacture. The manufacturer warrants that, under normal use and service, the material and workmanship of its products shall conform to the standards set forth on the applicable technical data sheets for a period of seven (7) years from the date of manufacture. In the event that an Arborite product does not perform as warranted, the first purchaser’s sole remedy shall be limited to repair or replacement of all or any part of the product which is defective, at the manufacturer’s sole discretion.

This warranty applies only to product:

1. In its original installation; and
2. Purchased by the first consumer purchaser.

This warranty shall not apply to defects or damage arising from any of the following:

1. Accidents, abuse or misuse;
2. Exposure to extreme temperature;
3. Improper fabrication or installation; or
4. Improper maintenance.

NO OTHER WARRANTIES, EXPRESS OR IMPLIED, ARE MADE. UNDER NO CIRCUMSTANCES SHALL THE MANUFACTURER BE LIABLE FOR ANY LOSS OR DAMAGE ARISING FROM THE PURCHASE, USE OR INABILITY TO USE THIS PRODUCT, OR FOR ANY SPECIAL, INDIRECT, INCIDENTAL, OR CONSEQUENTIAL DAMAGES. NO FABRICATOR, INSTALLER, DEALER, AGENT OR EMPLOYEE OF WILSONART AUSTRALIA HAS THE AUTHORITY TO MODIFY THE OBLIGATIONS OR LIMITATION OF THIS WARRANTY. THE MANUFACTURER WARRANTS THAT ARBORITE VINYL DOORS SHALL BE FREE FROM DEFECT FOR A PERIOD OF 7 YEARS FROM THE DATE OF MANUFACTURE.



03 5821 7277

Wilsonart Australia Pty Ltd  
350 Hume Highway  
Somerton VIC 3062  
Australia

For samples and  
technical information:  
T 1300 683 667  
[marketing@arborite.com.au](mailto:marketing@arborite.com.au)  
[www.arborite.com.au](http://www.arborite.com.au)



Follow Arborite on Facebook,  
Instagram, Pinterest & Twitter:  
[@ArboriteANZ](#)

 **ARBORITE®**