

C E M I N T E L[®]
CEMENT INTELLIGENCE

An idea born from imagination

The father of fibre cement, Ludwig Hatschek, started to imagine a new building material in 1894. He wanted a material that was lighter than brick, cheaper than slate and better than sheet metal.

In 1900, he achieved his breakthrough with a special mix of fibres, cement, pulp, air and water. The Austrian calls the world's first industrially manufactured building material 'Eternit' and numerous European countries adopted the technology from 1903. Australia first introduced the technology in about 1917.



Ludwig Hatschek



A product of nature



Cement



Water & Air



Radiata Pine





Unparalleled design flexibility

Fibre cement is perhaps one of the most flexible design building materials available today.

It can be manufactured in numerous panel sizes and thicknesses.

It can be cut into various shapes and patterns.

It can be compressed for high strength applications.

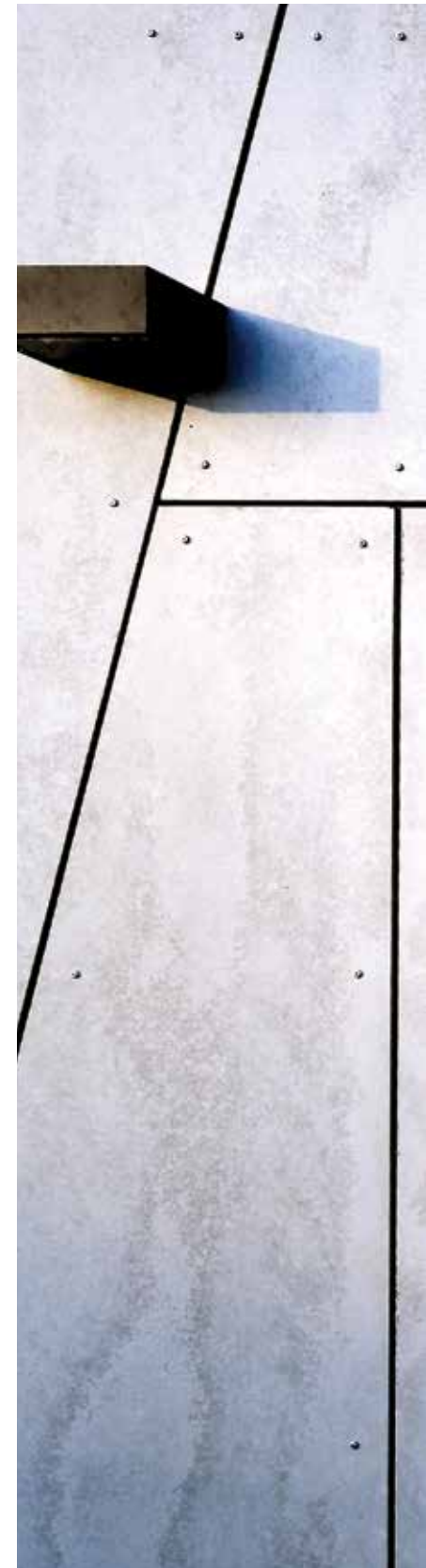
It can be used in acoustic systems.

It can be used as a superior wet area lining product.

It can be painted.

It can be tiled.

It can be used for fire resistance applications.





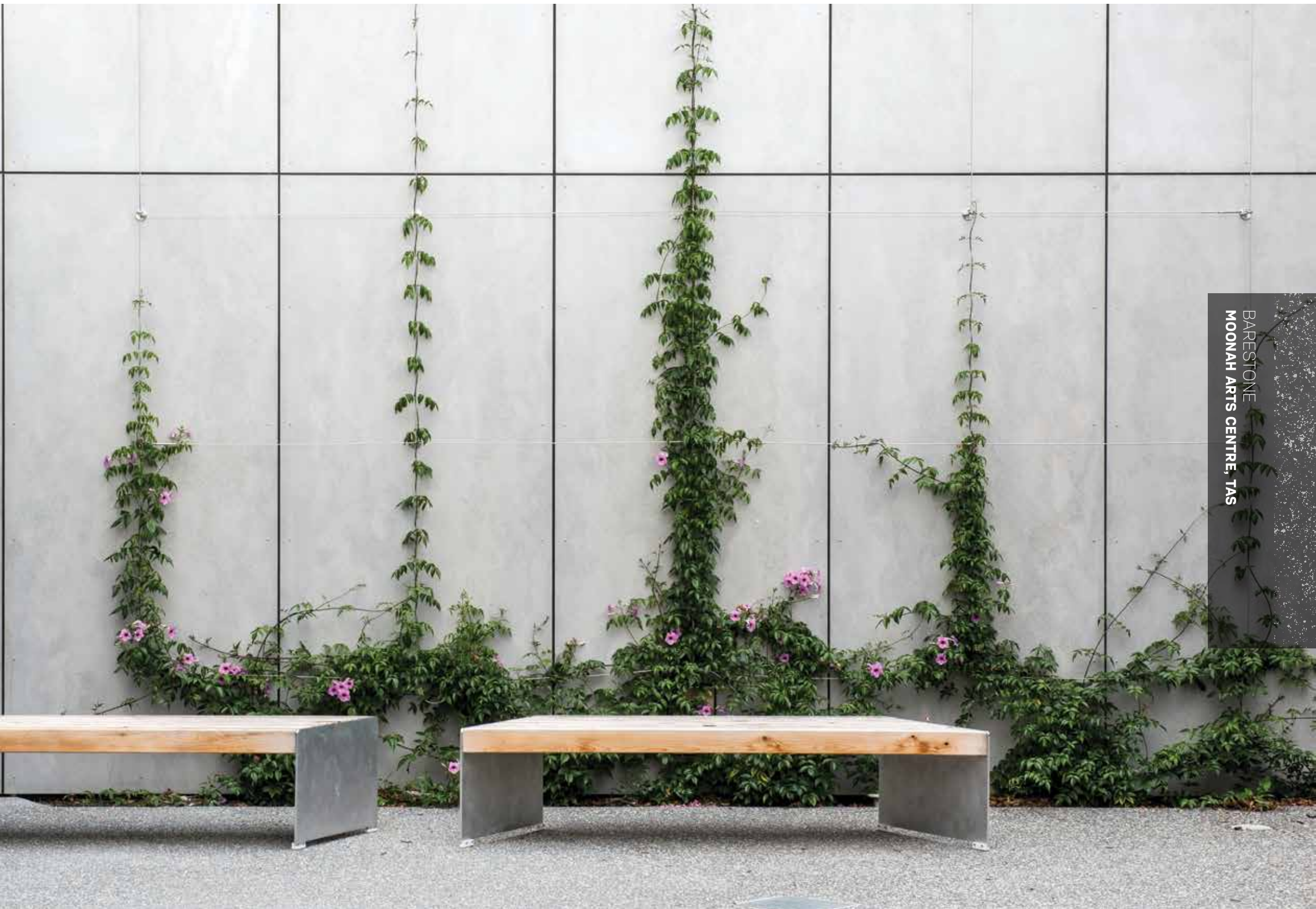
BARESTONE
PIMPALA KINDERGARTEN, SA

We love seeing how our products
inspire people and want to share
some great projects with you.

Enjoy!



the natural beauty of
Barestone



BARESTONE
MOONAH ARTS CENTRE, TAS

TERRITORY // WOODLANDS // SMOKED
HALLS HEAD, WA





WOODLANDS
Smoked



Simulate the warmth and natural look of timber, but without the maintenance.



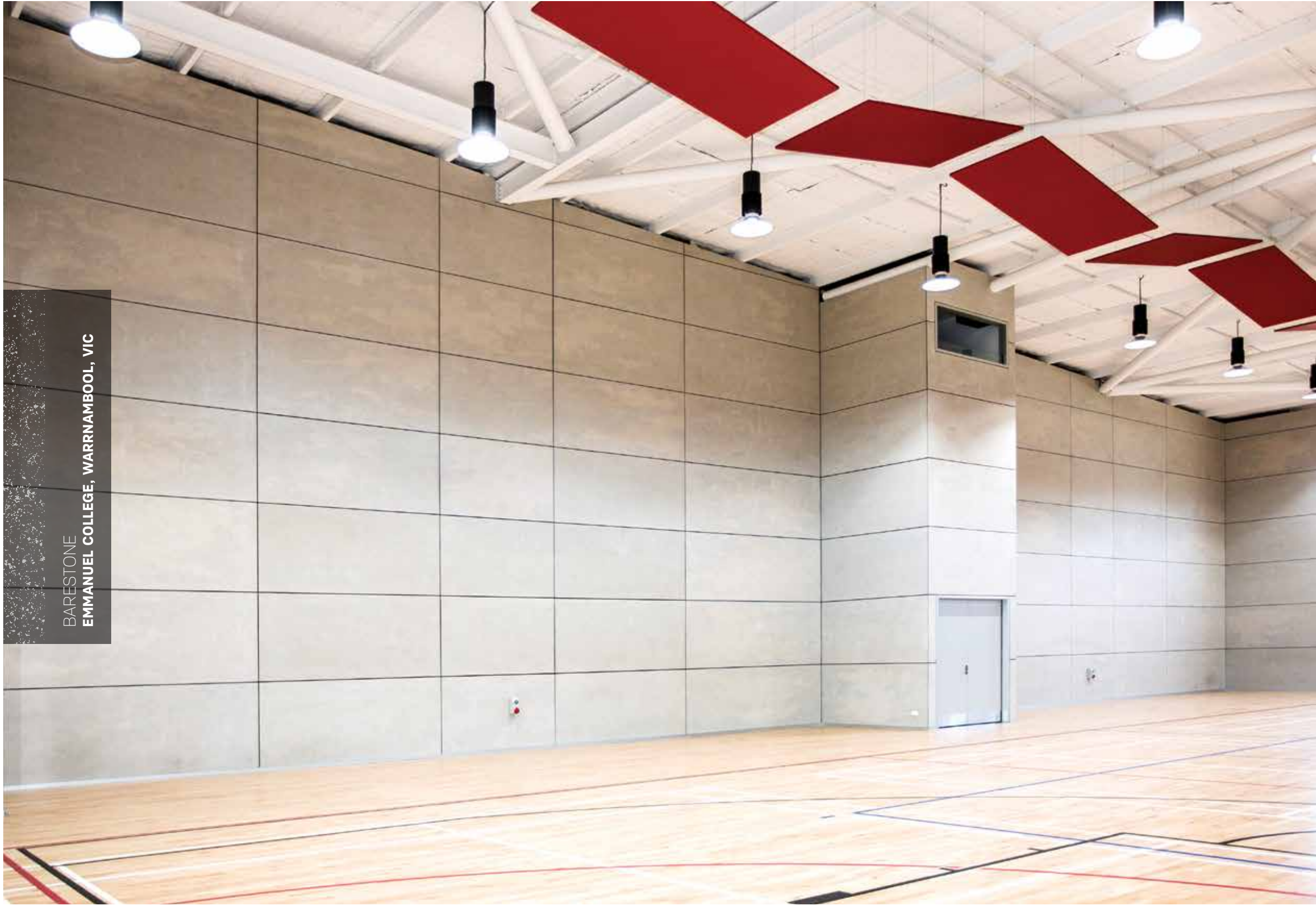
A vibrant inner city community of Sydney just got more beautiful.

Barestone





BARESTONE
UNILODGE, CHIPPENDALE, NSW



BARESTONE
EMMANUEL COLLEGE, WARRNAMBOOL, VIC



Fibre cement can be cut to any shape to customise your building.



Hard wearing & durable
Barestone



SAVANNAH Mist





TERRITORY // SAVANNAH // MIST
HALS HEAD, WA



BARESTONE
NSW

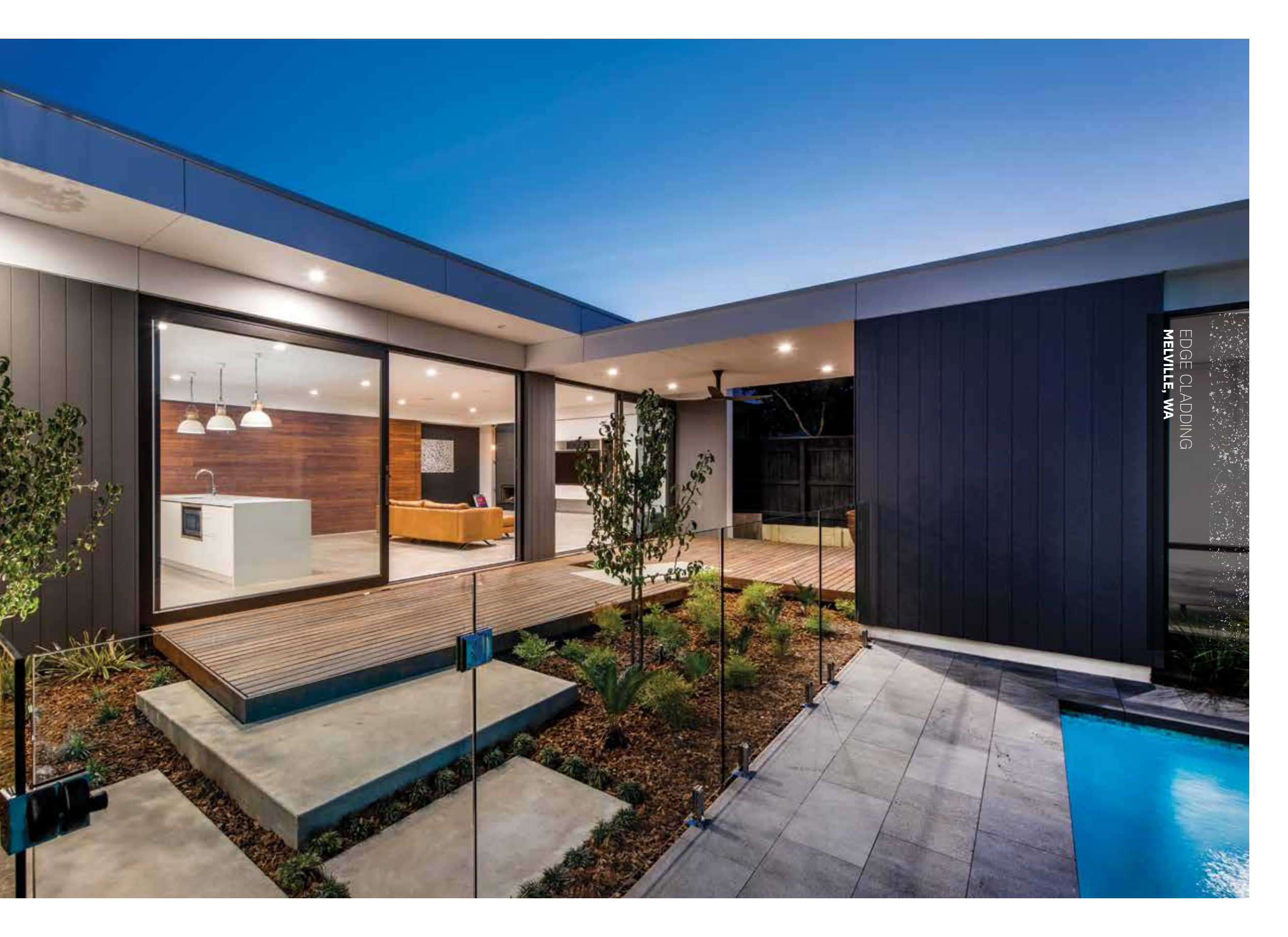


More than a feature,
make a bold statement with
Barestone



providing a definitive Edge





EDGE CLADDING
MELVILLE, WA

TERRITORY // QUARRY // URBAN GREY
WILLIAMSTOWN, VIC





Concrete & timber
A natural union



ARCHITECT: DIG DESIGN



This project showcases the extensive range available from Cemintel. With your creativity and our range of products, design flexibility is unlimited.



Cemintel
SEE THE POSSIBILITIES





SEE THE POSSIBILITIES
SOUTH BRISBANE, QLD

SCARBOROUGH
TOOWOON BAY, NSW





Creating a Queenslander in NSW
Scarborough





Express yourself with
ExpressWall





EXPRESSWALL
ART HOUSE ONE, NSW

TERRITORY // QUARRY // URBAN GREY
RED HILL, WA

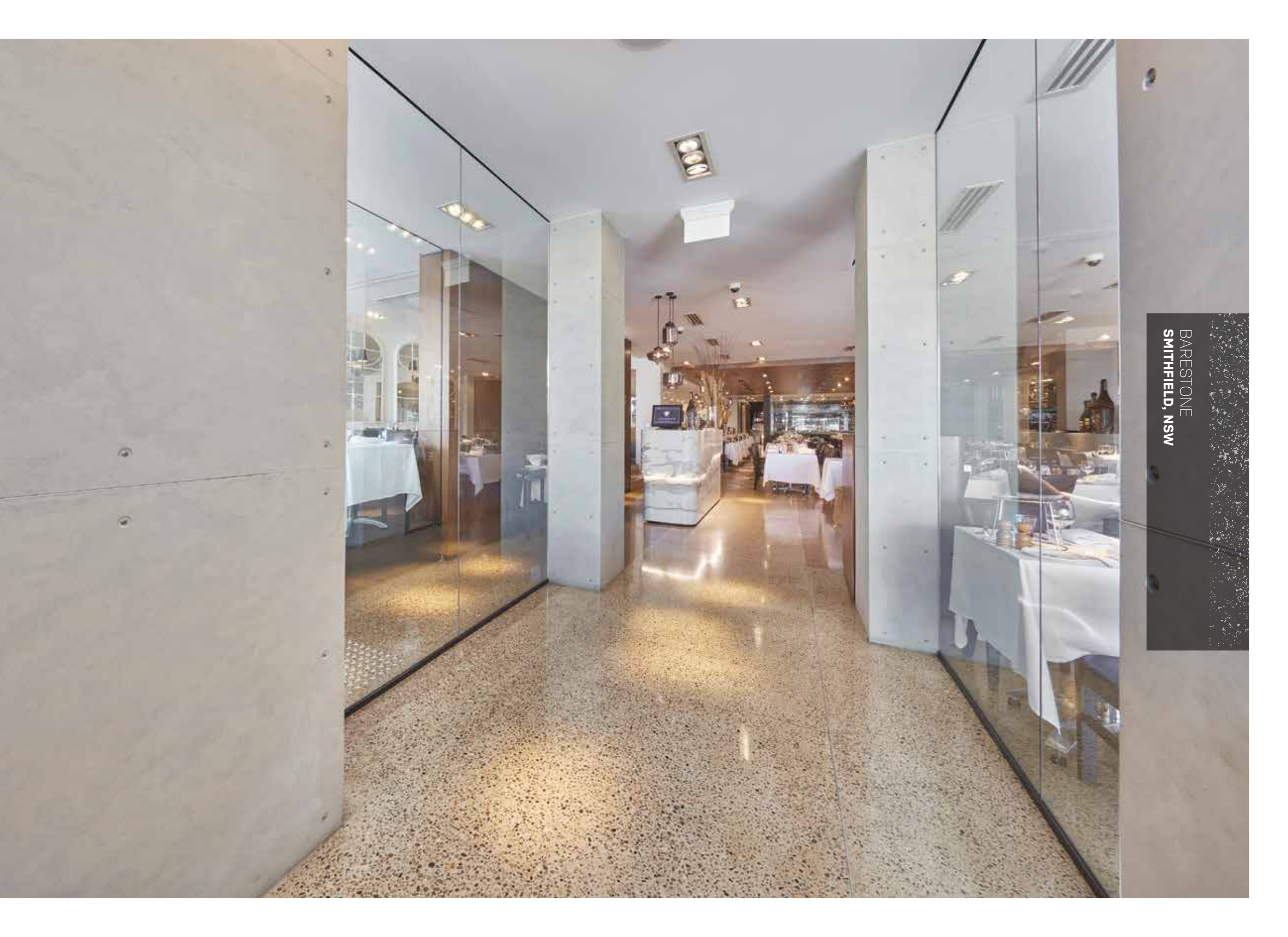




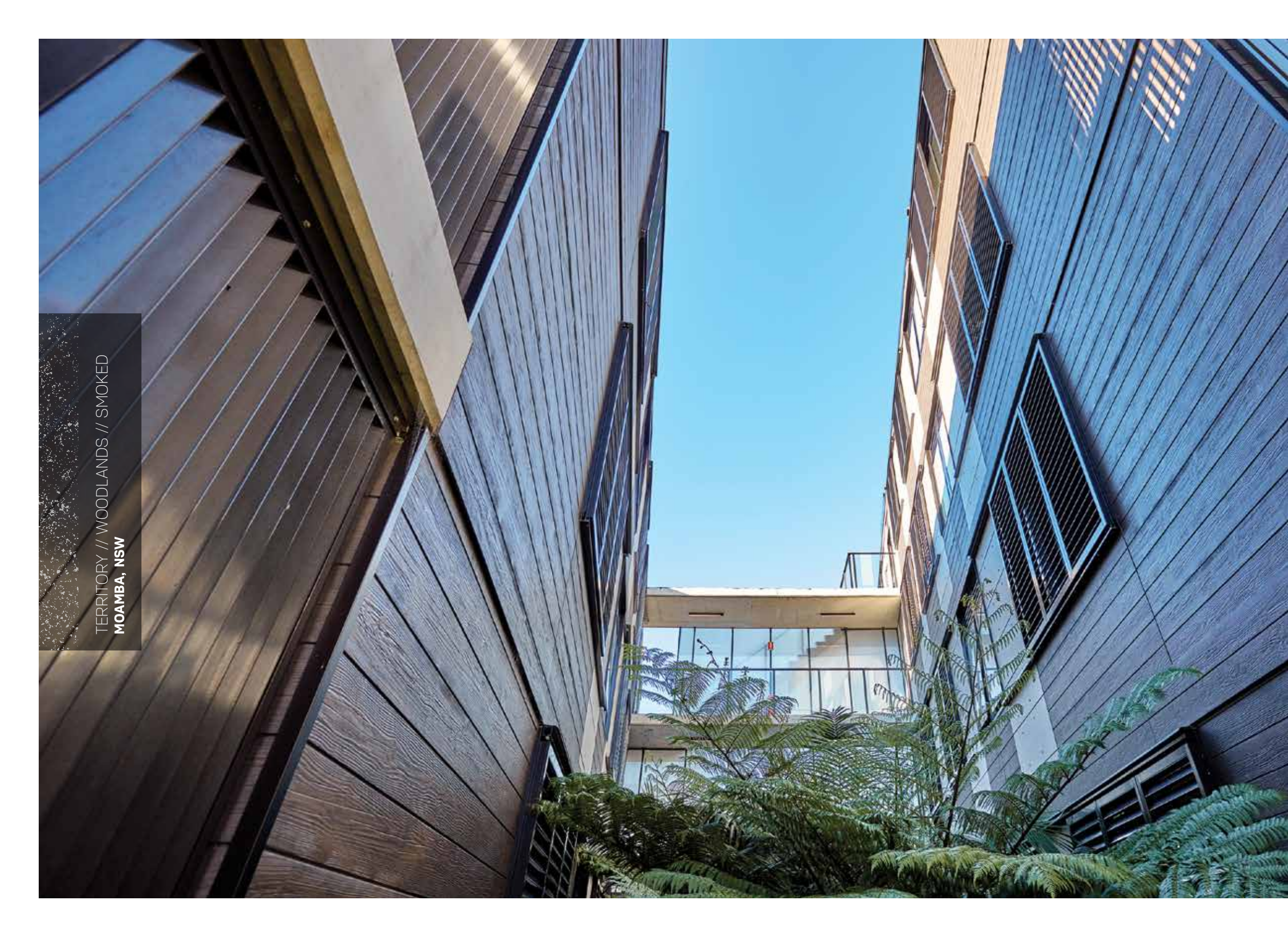
Living on the edge
Urban Grey



Bon Appétit
Barestone



BARESTONE
SMITHFIELD, NSW

A photograph of a modern building courtyard. The building's exterior is clad in dark, vertically-oriented wood panels. The courtyard is filled with lush green ferns and other plants. A glass-enclosed staircase is visible in the background, and the sky is a clear, bright blue. The lighting suggests a sunny day, with shadows cast across the wood cladding.

TERRITORY // WOODLANDS // SMOKED
MOAMBA, NSW



WOODLANDS
Smoked
&
QUARRY
Urban Grey



Urban Grey



TERRITORY // QUARRY // URBAN GREY
OSBORNE PARK, WA

TERRITORY // QUARRY // CONCRETE
WELLARD, WA

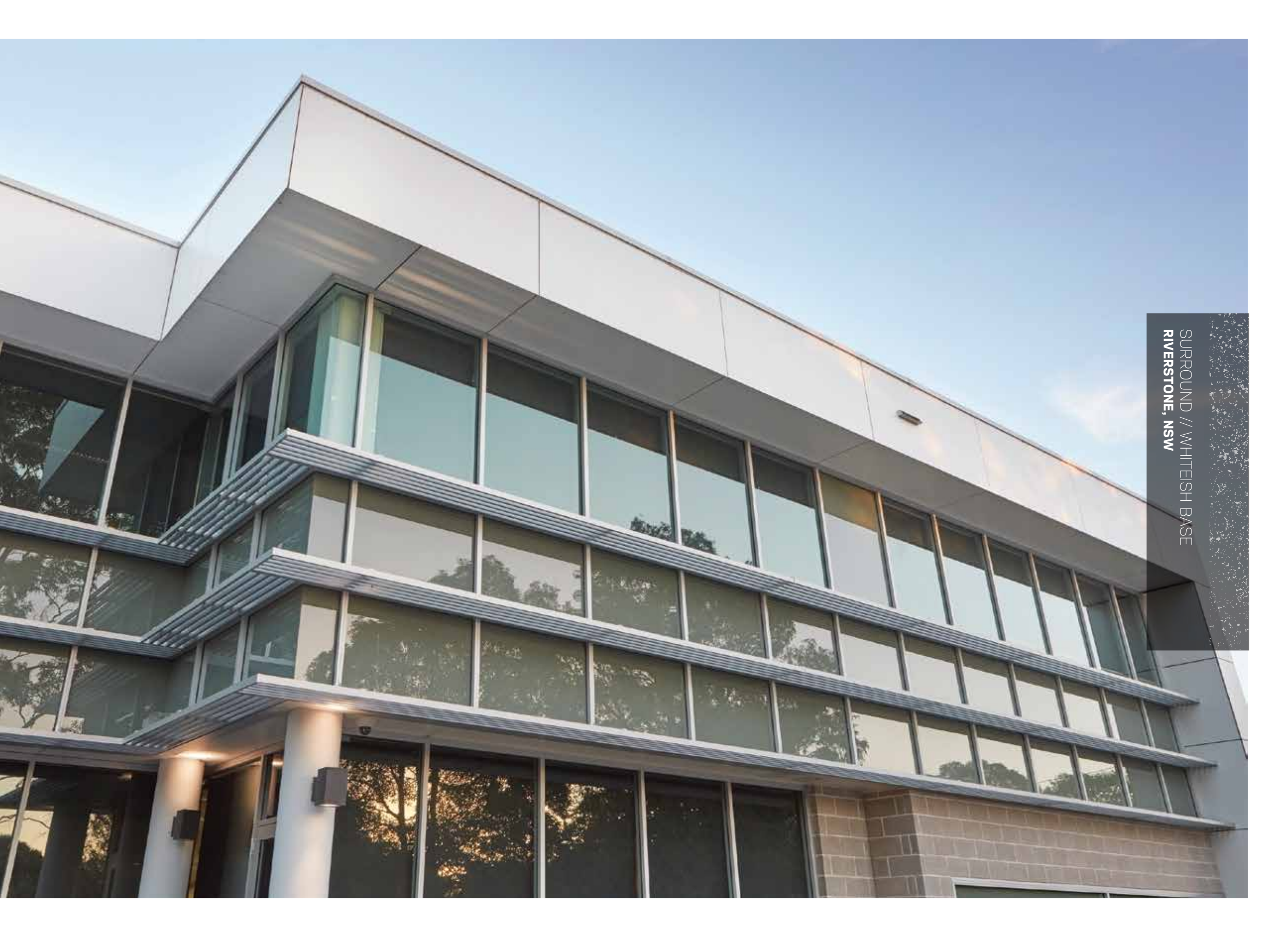
mano
early learning centres



Concrete & timber
A great place to learn



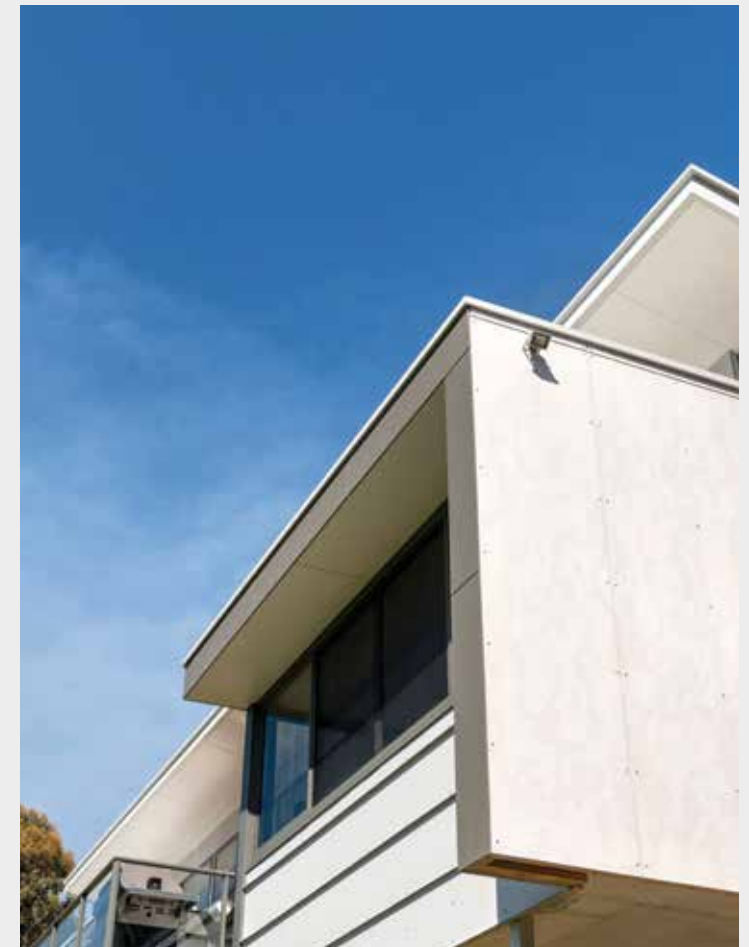
Whiteish Base
SURROUND



SURROUND // WHITEISH BASE
RIVERSTONE, NSW

BARESTONE
GOOSEBERRY, WA





A bush gem
Barestone

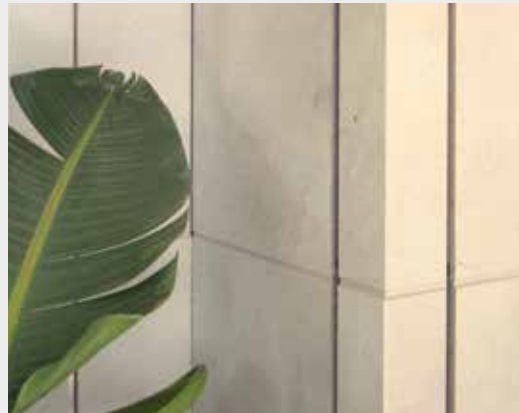


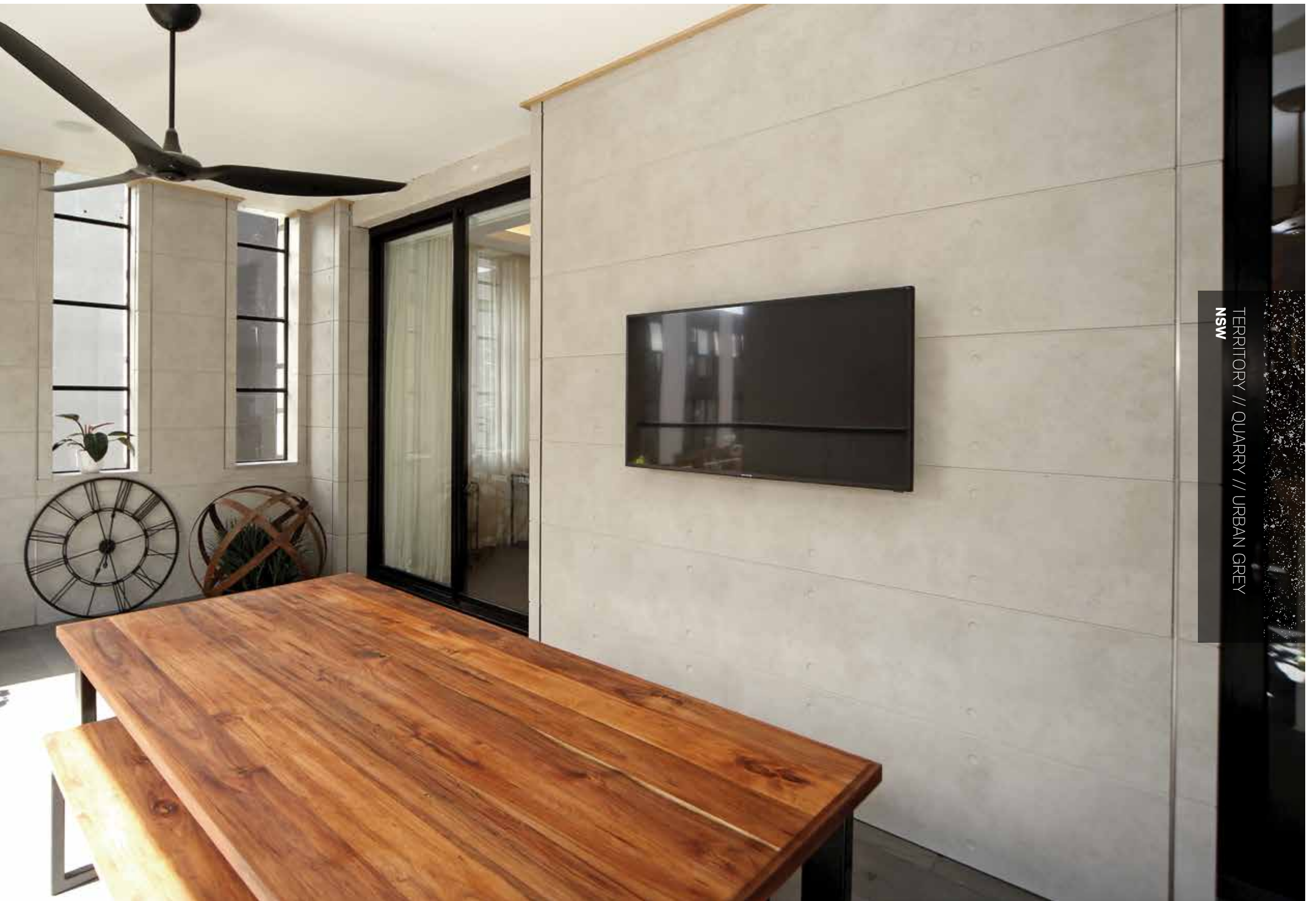
Territory products enhance any interior space.



Back to basics

Urban Grey





TERRITORY // QUARRY // URBAN GREY
NSW



BARESTONE
QUEENSLIFF, NSW



Barestone



ARCHITECT: WATERSHED DESIGN
PHOTOGRAPHY: SIMON WHITBREAD



Barestone



ARCHITECT: WATERSHED DESIGN
PHOTOGRAPHY: SIMON WHITBREAD





BARESTONE
MANLY, NSW



TERRITORY // WOODLANDS

Woodlands are a habitat where trees are the dominant plant form. The individual trees overlap and interlink to form a canopy, filtering the light and creating a mosaic of light and shadow on the ground below.

- 01 | TEAK
- 02 | SMOKED
- 03 | LIMED
- 04 | WHITEWASH
- 05 | EBONY





01 | CLOUD 02 | MIST 03 | SHADE 04 | HAZE



TERRITORY // SAVANNA

Picture the hot and humid temperature of the savanna creating a haze as far as the eye can see. A random cloud floats across the sky, forming a shadow that offers a moment of relief from the hot sun. Animals move from tree to tree in search of shade. When the rain comes a mist forms that heightens the scent of eucalypts that scatter the landscape. It is the tones of these eucalypts that inspire the smooth finish of the Savanna range.

TERRITORY // CANYON

| RIPPLE



Rivers carve their way through the landscape to form canyons over geological timescales. These breathtaking landscapes, fully exposed to all of the elements with no protection, reveal beautiful rippled, layered and mottled surfaces. Each canyon is perfect, individual and inspiring, putting into perspective the grandiosity of Mother Nature.



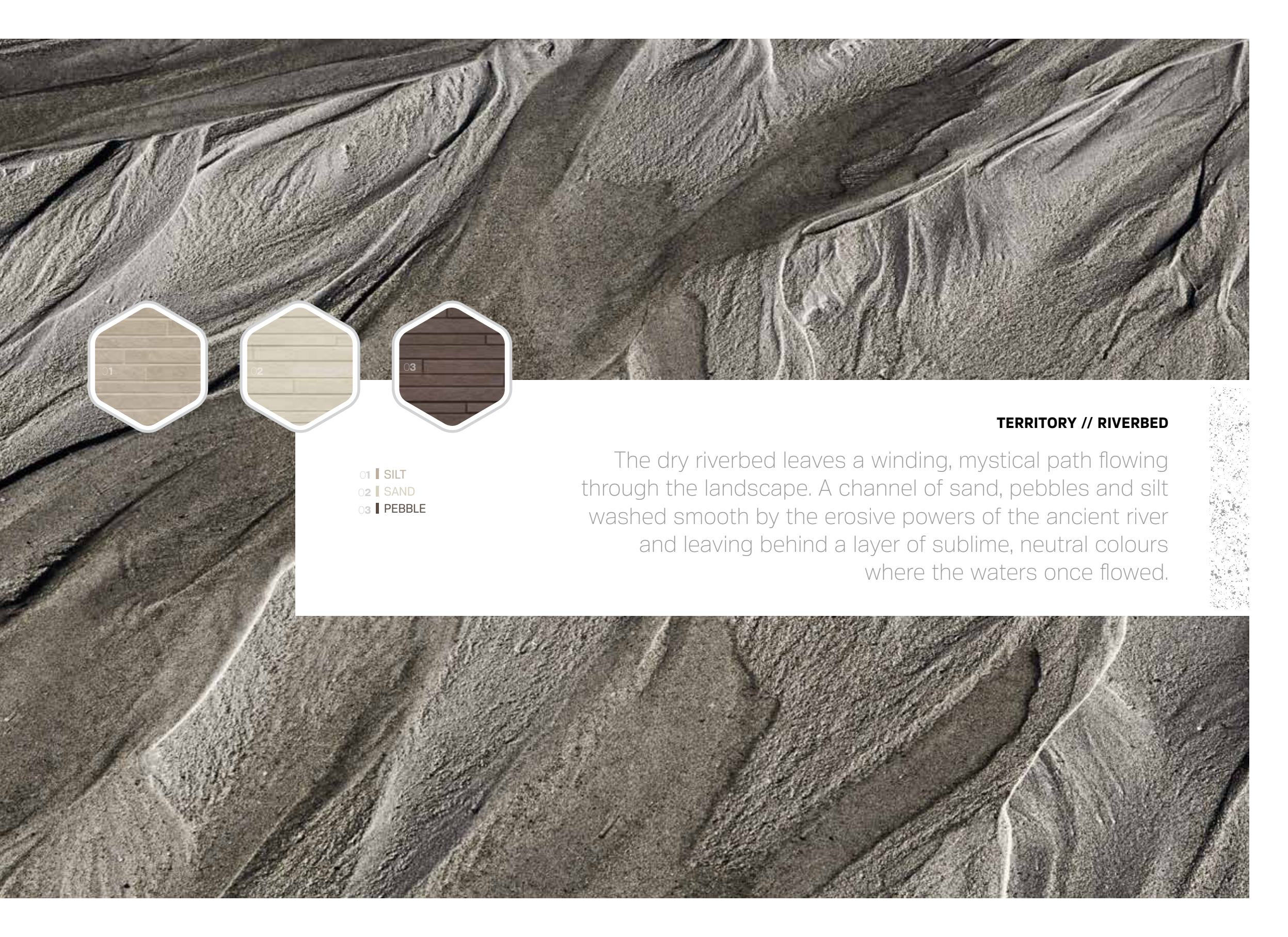
- 01 | TUNDRA
- 02 | ALPINE
- 03 | MONTANE



TERRITORY // STEPPE

The dry, grassy and arid plains of the steppe have distinct seasonal changes in temperature, with cold winters and warm summers. These extremes are reflected in the sepia tones seen on the steppe, colours that evoke timeless, wide open spaces.





- 01 | SILT
- 02 | SAND
- 03 | PEBBLE

TERRITORY // RIVERBED

The dry riverbed leaves a winding, mystical path flowing through the landscape. A channel of sand, pebbles and silt washed smooth by the erosive powers of the ancient river and leaving behind a layer of sublime, neutral colours where the waters once flowed.



01

TERRITORY // QUARRY

Man-made, the excavations of a quarry supply the materials used for many building applications. Concrete is one of the most utilised products in the world and has its origins in a quarry. It is much loved in design because of its raw, unpretentious, malleable and functional properties.

01 | URBAN GREY
02 | CONCRETE



01





01 | PEARL
02 | STEEL



TERRITORY // RIDGE

Narrow, elevated rocky outcrops create distinct lines across the landscape. The channels of Ridge mirror this defined linear pattern. Add a metallic paint finish to these tapered lines and you get a delightful and ever-changing profile, as light plays on the surface. Not for the faint-hearted, Ridge creates a strong visual presence.



01 BASE

02 MARL

03 METAL

04 LEATHER

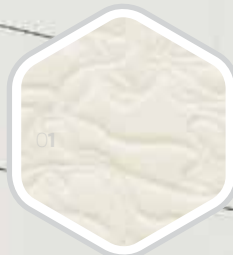
05 STRING



SURROUND // GREYISH

Based on the colour of concrete slurry, Greyish is a dense, warm colour that works well on its own for a subdued effect or as a complement to bolder colours.





- 01 STRING
- 02 LEATHER
- 03 METAL
- 04 MARL
- 05 BASE

SURROUND // WHITEISH

Some say white is not a colour at all, but Whiteish is created with a hint of warm pigments giving it the look of fine alabaster. Whiteish matches beautifully with every colour in the Surround palette.



SURROUND // BLUEISH

It's actually grey but with the addition of blue, making Blueish the colour to choose for a cool, serene effect. In metallic, it is the colour that most looks like sophisticated, stainless steel.

- 01 STRING
- 02 LEATHER
- 03 METAL
- 04 MARL
- 05 BASE





01 STRING

02 LEATHER

03 METAL

04 MARL

05 BASE



SURROUND // GREENISH

Inspired by the warm, muted greens of the Australian Eucalypt, Greenish makes a direct connection with the natural landscape for every type of project.

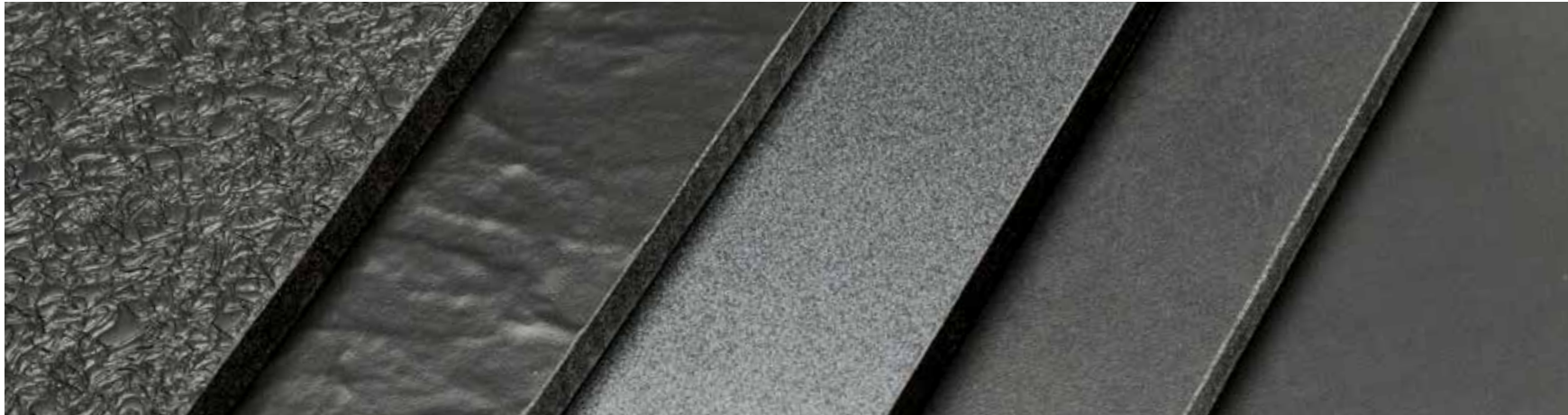
01 STRING

02 LEATHER

03 METAL

04 MARL

05 BASE



SURROUND // BLACKISH

Deep and dark, Blackish is the most monumental of all the colours. It is stunning on its own in a combination of smooth and textured finishes.







cemintel.com.au

CSR