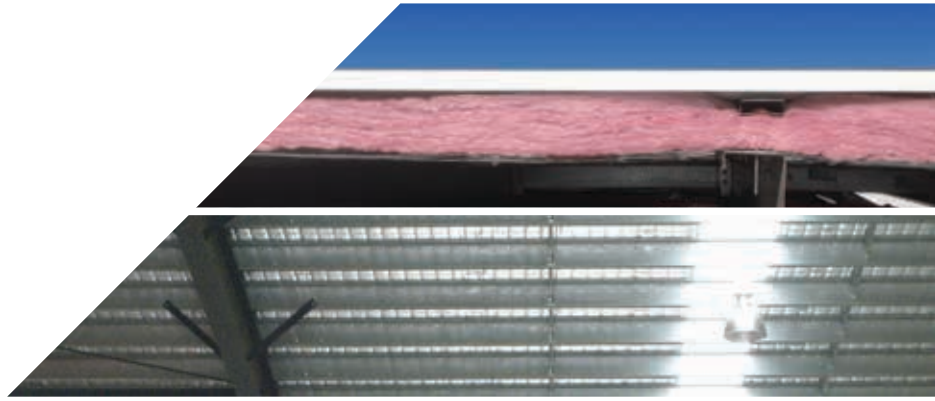


Fletcher[®] Insulation

Building Better, Together.



Roofing & Commercial Catalogue



Contents

Trusted solutions: Fletcher Insulation	3
Credentials	4
National Service Offer	5
NCC Deemed-to-Satisfy & FletcherSpec® Pro	6-7
Permastop® Building Blanket	8-9
Pink® Building Blanket	10
Permastop® Tropic Building Blanket	11
Permatuff Building Blanket	12
Safety Mesh	13
Roof Rack®	14
Roof Razor®	15
Pink® Partition	16-17
Pink® Partition HD Panels	18
Polyester Acoustic Partition Blanket	19
Pink® Batts: Ceiling & Wall	20-21
Pink® NoiseSTOP with Durasorb® Facing & Tape	22
Pink® Thermal Slab	23
PiRFORMATHERM®	24
Loaded Vinyl Barrier	25
Pipe Acoustic Lagging	26
Sisalation® Foam Cell Multipurpose	27
Sisalation® Foam Cell Shed Liner	28
Sisalation® Bubble Cell	29
Sisalation® Metal Roof	30
Sisalation® Facing Foils	31
Sisalation® Vapawrap™	
Sisalation® Vapawrap™ Wall	32
Sisalation® Vapawrap™ Metal Roof.....	32
Tyvek HomeWrap™	33
Sisalation® Tuff Wrap™	34
Accessories & Tapes	
FI XPS Foam Spacers.....	35
Thermatape™ Thermal Break Strip	36
Vapastop® 883 Reinforced Foil Tape	37
Plain Foil Tape	37
Double Sided Cloth Tape	38
Sisalation® MD 440WF White Tape	38
Black Tape.....	38
Roofing & Commercial Product Application Guide	39



Trusted solutions: Fletcher Insulation

Fletcher[®]
Insulation

Building Better, Together.

With one of Australia's widest distribution and sales coverage networks, Fletcher Insulation provides energy efficient and acoustic solutions to the residential, commercial HVAC and industrial markets. We manufacture and distribute a wide range of insulation products specially designed for Australian thermal and acoustic systems.

At the forefront of innovation and development of new trends as well as cost effective and compliant products, we remain committed to offering valuable service to our customers. Our national sales force has the experience and knowledge to provide assistance for any project or development to meet non-combustibility, acoustic and energy efficiency performance requirements.

The Commercial Market

The market for insulation in the commercial building sector demands products that enable buildings to meet stringent requirements as set out in the National Construction Code (NCC) for thermal, acoustic and fire performance. Fletcher Insulation provides tested and proven insulation products from building blanket used in metal deck roofing, Sisalation[®] Building Membranes for roofing and wall applications to partition wall insulation or suspended slab and specialist acoustic insulation applications.



National Service Offer

Our Service Offer

- To best suit our customer's needs Fletcher Insulation offers:
 - Next working day delivery^{1,3} for stocked products, which is arranged on a first come, first serve basis. Order cut-off times³ apply.
 - Customer pick-up for stocked products can be arranged Monday to Friday (excluding public holidays). Prior arrangements and at least a one hour pick up notice must be made. Please check your local branch Service Offer for more details.
 - If customers require urgent delivery of stocked products, a courier can be arranged and will incur additional charges. This will be priced on request when the order is placed (branch metro and regional delivery times differ, please check your local branch Service Offer for more details)².
 - All deliveries are made on a first come, first serve basis until Fletcher Insulation transport facilities are exhausted (bookings are limited)¹. Fletcher Insulation will confirm ETA³ at time of order.
- Metro CTL³ blanket orders of less than 5000m² can be delivered within 2-5 working days following the receipt of the order (cut-off times apply). Delivery times for larger orders or regional deliveries will be agreed upon acceptance of order.
- All deliveries require a contact number at the delivery address for the Service Offer to apply.
- All store deliveries within the defined branch metro area³ under minimum order value³ will be charged the minimum delivery fee, unless otherwise stipulated. Please contact your sales representative for further details.
- All site deliveries within the defined branch metro area³ will be charged the minimum delivery fee, unless otherwise stipulated. All site deliveries outside of branch metro area³ will be priced on application, please contact your sales representative for further details.
- Deliveries with special requirements such as crane lifts or time-specific deliveries will incur additional charges priced on application.
- Building site deliveries require a letter of authority to drop in case there is no one available to accept the delivery.
- In regional³ areas² orders placed prior to the next working day delivery^{1,3} cut-off time³, can be delivered to the freight forwarder³ the next working day. From this point on the freight forwarder³ policy applies and freight charges are as agreed. (Delivery cut-off times vary between branches, please check your local branch Service Offer).
- In all delivery circumstances no liability is accepted in cases of force majeure³.
- Returns Policy:
 - A restocking fee of \$120 + GST³ or 20% of the total invoice value (whichever is higher) applies to all stock that is returned.
 - All returned goods must be in re-saleable condition as determined by Fletcher Insulation.
 - CTL³ and MTO³ products are non-refundable.

Conditions apply. Further details are provided in your local branch Service Offer.

¹ Next working day and same day delivery is not always possible as bookings are limited. Please note this offer is subject to stock availability.

² Metropolitan and Regional areas are as defined by branch.

³ Please see Definitions for explanation of terminology.

Definitions

Branch metro area: a geographical area defined by the branch.

CTL: Cut-To-Length: a special order where the length of a product is specified.

Cut-off time: time restriction on orders for delivery times as defined by the service offer.

ETA: Estimated Time of Arrival.

Force majeure: an event beyond the control of Fletcher Insulation (e.g. natural disaster).

Freight Forwarder: a carrying company that is contracted for the delivery of products on behalf of Fletcher Insulation.

GST: Goods and Services Tax.

Minimum order value: Single order value amount excluding GST as defined by the vendor.

MTO: Made-To-Order; product that is made for a specific order.

Next working day delivery: delivery prior to 4.00pm on the next working day from the date the order is placed.

Regional: area outside of metro area.

Same day delivery: delivered prior to 4.00pm on the day of order (charges apply).



NCC Deemed-to-Satisfy and FletcherSpec® Pro

NCC 2016 Deemed-to-Satisfy insulation for commercial class 2 to 9 buildings

Building classes 2 and 4 must collectively achieve an average energy rating of not less than 6 stars and individually achieve an energy rating of not less than 5 stars.

Table 1: Roofs and Ceilings								
Options	Minimum System R-value for climate zones:							
	1	2	3	4	5	6	7	8
i. A roof or ceiling with a roof upper surface solar absorptance value of not more than 0.4	3.2	3.2	3.2	3.2	3.2	3.2	3.7	4.8
ii. A roof or ceiling with a roof upper surface solar absorptance value of more than 0.4 but not more than 0.6	3.7	3.7	3.7	3.7	3.7	3.2	3.7	4.8
iii. A roof or ceiling with a roof upper surface solar absorptance value of more than 0.6	4.2	4.2	4.2	4.2	4.2	3.2	3.7	4.8

Concessions and variations apply. Refer NCC 2016 Vol.1 Section J

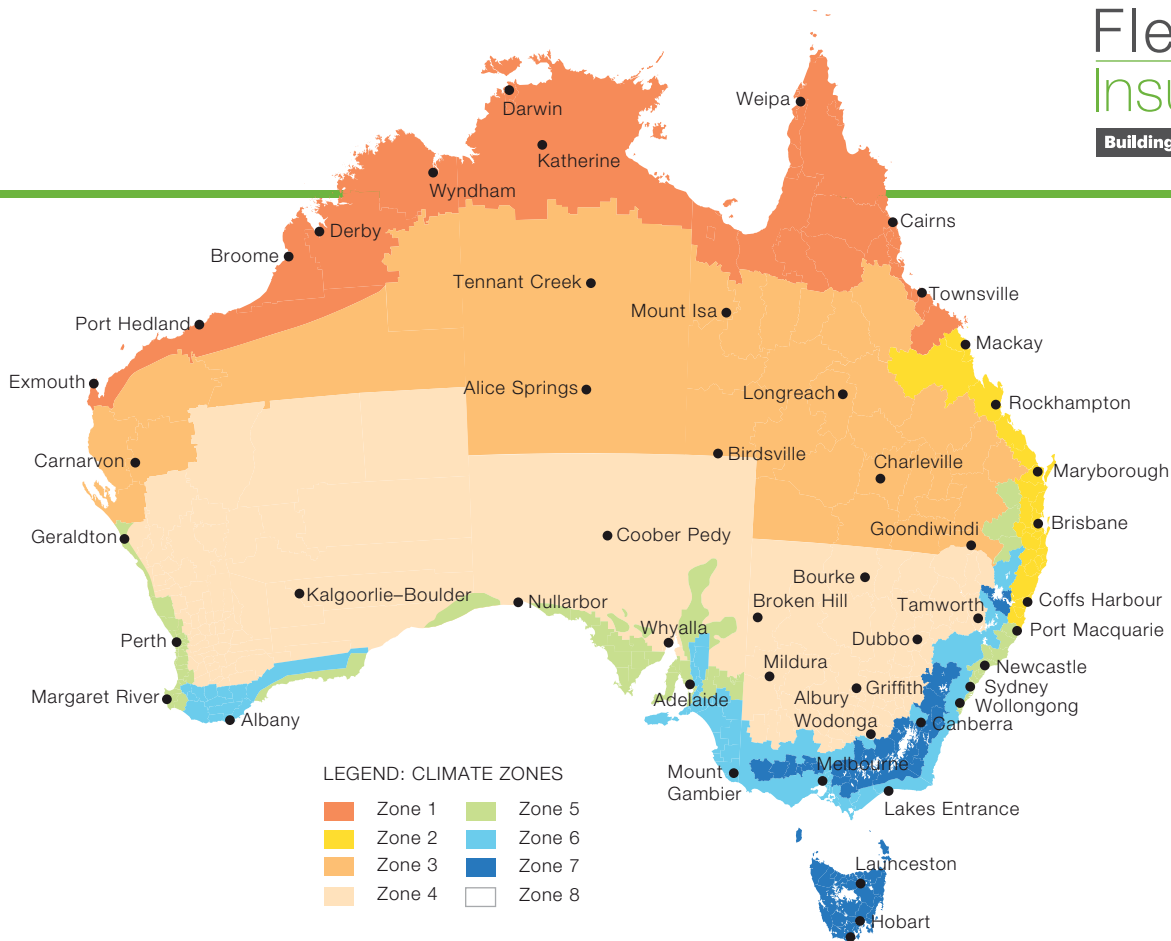
Table 2: External Walls								
Options	Minimum System R-value for climate zones:							
	1	2	3	4	5	6	7	8
i. An external wall that is part of an envelope	3.3	3.3	3.3	2.8	2.8	2.8	2.8	3.8
ii. An envelope wall other than an external wall	1.0	1.0	NIL	NIL	1.0	1.0	1.5	2.5
iii. For other than (ii)	2.3	2.3	2.3	1.8	1.8	1.8	2.8	3.8

Concessions and variations apply. Refer NCC 2016 Vol.1 Section J

Table 3: Floors								
Options	Minimum System R-value for climate zones:							
	1	2	3	4	5	6	7	8
i. A suspended floor without an in-slab heating or cooling system where the non-conditioned space is enclosed and where mechanically ventilated by no more than 1.5 air changes per hour	1.0	1.0	NIL	NIL	1.0	1.0	1.5	2.5
ii. A suspended floor with an in-slab heating or cooling system where the non-conditioned space is enclosed and where mechanically ventilated by no more than 1.5 air changes per hour	1.25	1.25	1.25	1.25	1.25	1.25	1.75	2.75
iii. A slab on ground without an in-slab heating or cooling system	NIL	NIL	NIL	NIL	NIL	NIL	1.0	2.0
iv. A slab on ground with an in-slab heating or cooling system	1.25	1.25	1.25	1.25	1.25	1.25	1.25	2.25
v. For other than (i), (ii), (iii) or (iv)	2.0	2.0	2.0	2.0	2.0	2.0	2.0	3.5

Concessions and variations apply. Refer NCC 2016 Vol.1 Section J

A sub-floor space with not more than 150% of the required sub-floor ventilation is considered enclosed.



LEGEND: CLIMATE ZONES

 Zone 1	 Zone 5
 Zone 2	 Zone 6
 Zone 3	 Zone 7
 Zone 4	 Zone 8

Specifier Advisory Services

Specifying the most efficient and cost-effective thermal and acoustic insulation products to be used in a building can be a daunting task. Architects, Specifiers and Building Certifiers are faced with an overwhelming range of products and brands and have to meet stringent requirements prescribed by the National Construction Code (NCC) and Australian Standards, especially in relation to energy efficiency. On top of this they have to bear in mind the cost and often the aesthetic value of the products they specify or approve.

Fletcher Insulation provides positive support for building specification professionals in two practical ways:

- 1 by being a **one-stop shop** for all their clients thermal and acoustic insulation needs;
- 2 by providing **FletcherSpec® Pro**, an **online specifier advisory service** which helps building construction professionals find the perfect insulation products for their project.

Launched in 2015, FletcherSpec® Pro has revolutionised the way in which thermal calculations pertaining to wall, floor and roof systems are generated. The software provides complete user flexibility allowing for an infinite number of system variations to be generated. Architects and Specifiers are able to develop a standard system through the use of pre-existing templates or alternatively, may opt to build a custom system from scratch. Either way, FletcherSpec® Pro provides complete guidance from start to finish prompting users when they have fulfilled relevant Deemed-to-Satisfy provisions.



Moreover, Fletcher Insulation's comprehensive insulation offering means you are able to satisfy the vast majority of your insulation specification requirements through a single provider, saving you and your client time and money.

Fletcher Insulation offers free in office group training seminars for Architects and Specifiers including CPD Training Programs.

Permastop® Building Blanket



PERMASTOP®
Making metal roofs better

Designed for: Use in residential and commercial metal clad roof and wall applications to provide condensation protection, while also providing excellent thermal and acoustic benefits for the building.

Made from: Reflective insulation composite comprising of a Pink® glasswool blanket substrate that is faced on one side with a high quality Sisalation® reflective foil laminate.

- ✓ Next day delivery service available*
- ✓ 10 year product warranty
- ✓ Aids in minimising the risk of condensation
- ✓ Satisfies Bushfire Attack Level (BAL) requirements of 0-40 in roof applications and 0-FZ in wall applications (in accordance with AS3959 – 2009)
- ✓ Reduces sound transfer from the external environment (i.e. rain and overhead traffic) into the building
- ✓ Designed for all year round comfort reducing energy consumption and saving you money
- ✓ Manufactured from up to 80% recycled glass
- ✓ Faced with industry leading Sisalation® reflective foil laminate in your choice of Light, Medium or Heavy Duty strength
- ✓ 150mm foil overlap along one side edge, for ease of installation
- ✓ Available in custom lengths to improve installation efficiency

Hints

- A heavier duty foil provides increased strength and is therefore less likely to be damaged over time or during installation
- Allow sufficient space for the insulation to recover to its nominal thickness to achieve its designed effectiveness
- Permastop® Building Blanket is not a sarking membrane, hence should not be lapped into the gutter
- The product is not suitable for applications where subject to wetting or excessive moisture

Support Spacing	Sisalation® Duty
≤600	Light Duty (LD)
≤900	Medium Duty (MD)
≤1200	Heavy Duty (HD)
>1200	Use support mesh with any of the above

Q&A

What way should Permastop® Building Blanket be rolled out when installing?

Permastop® Building Blanket is typically installed with the reflective surface facing downwards into the air-space below; except in hot and humid tropical regions where the reflective foil is typically installed facing the underside of the metal roof sheet. In such conditions, where the building blanket is used in an exposed application, Fletcher Insulation recommends installing the blanket as per standard procedures and running an additional layer of anti-glare foil laminate on top of the blanket under the metal roof sheet. This allows for an enhanced aesthetic finish.

What is the benefit of installing Permastop® with higher R-Values in place of ceiling insulation?

Most modern commercial buildings have significant services running through the ceiling space, because of this reason it's more time efficient to install roof insulation than ceiling insulation.

*Next day delivery for stocked items within branch metro areas.

The colour PINK, Pink® and Pink® Batts are registered trademarks of Owens Corning and used under licence by Fletcher® Insulation Pty Limited.

Facing	Material R-value	Product code	Nominal thickness mm	Width mm	Length m	m ² per roll	Group no. AS5637*
Sisalation® 436 Facing Foil Light Duty (LD) 150mm lap	R1.3	912150	55	1200	15	18	1
		912200		1200	20	24	
	R1.4	910150†	60	1200	15	18	
		910200†		1200	20	24	
	R1.8	913150	75	1200	15	18	
	R2.3	914163	100	1200	10	12	
	R2.5	914100	100	1200	10	12	
	R3.0	930100	130	1200	10	12	
	R3.2	930101	130	1200	10	12	
R3.6	930368	130	1200	6.5	7.8		
Sisalation® 430 Facing Foil Medium Duty (MD) 150mm lap	R1.3	917150	55	1200	15	18	2
	R1.4	930366†	60	1200	15	18	
	R1.8	918150	75	1200	15	18	
	R2.3	911471	100	1200	10	12	
	R2.5	919100	100	1200	10	12	
	R3.0	931100	130	1200	10	12	
	R3.2	930201	130	1200	10	12	
Sisalation® 450 Facing Foil Heavy Duty (MD) 150mm lap	R1.3	927150	55	1200	15	18	2
	R1.4	930365†	60	1200	15	18	
	R1.8	928150	75	1200	15	18	
	R2.3	928163	100	1200	10	12	
	R2.5	929100	100	1200	10	12	
	R3.0	932100	130	1200	10	12	
	R3.2	930301	130	1200	10	12	
R3.6	930367	130	1200	6.5	7.8		

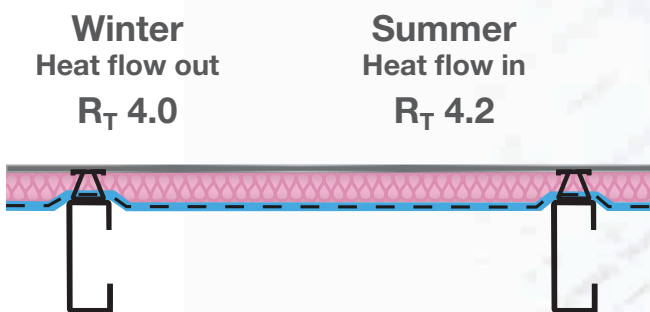
† Available to Brisbane and Townsville metro areas for next working day delivery service only.

Other made to order (MTO) options and facings may be available, consult your branch for availability and lead times.

*AS5637.1:2015 : Determination of fire hazard properties - Wall and ceiling linings.

System Example

Flat Metal Roof



Flat metal roof at 0° to 5° pitch, safety mesh over purlins. 130mm Permastop® blanket R3.6 laid over safety mesh, blanket allowed to recover to its nominal thickness by using 100mm Roof Rack insulation spacer. Foil side of blanket should face into the airspace below.

Fletcher Spec^{pro}

Download
FletcherSpec[®] Pro
TODAY

Calculate your total R-value
in just a few clicks
www.insulation.com.au/fletcherspec



Pink® Building Blanket



Designed for: Use in conjunction with Sisalation® product range in residential and commercial metal clad roof and wall applications. Providing excellent thermal and acoustic properties by reducing heat loads entering a building. Minimising the internal reverberation and flow of unwanted nuisance noise generated from adjacent buildings/ rooms and/or the external environment.

Made from: Lightweight, flexible and resilient 80% recycled glass.

- ✓ 10 year product warranty
- ✓ Non-combustible in accordance with AS1530.1-1994 reducing fire risk
- ✓ Satisfies Bushfire Attack Level (BAL) requirements of 0-40 in roof applications and 0-FZ in wall applications (in accordance with AS3959 – 2009)
- ✓ Reduces sound transfer from the external roof environment into the building (i.e. rain and overhead traffic)
- ✓ Ideal for noise control behind perforated ceilings
- ✓ Designed for all year round comfort reducing energy consumption and saving you money
- ✓ Absorbs less than 0.2% moisture by volume when exposed to environmental conditions of 50°C and 95% relative humidity for four days
- ✓ Maximum service temperature of 340°C
- ✓ Available in custom lengths to improve installation efficiency

Hints

- Pink® Building blanket is generally supplied shrink-wrapped in bundles of four. If weatherproof packaging is required please advise when placing the order
- Allow sufficient space for the insulation to recover to its normal thickness to ensure its designed effectiveness
- The product is not suitable for applications where subject to wetting or excessive moisture

Q&A

What is the benefit of using Pink® Building Blanket over Permastop® Building Blanket?

Pink® Building Blanket provides greater flexibility during installation which is used in conjunction with Sisalation® products allowing for an enhanced aesthetic finish when openly viewed from below.

What is the availability?

Availability varies from next day delivery to 10 working days plus transit time, consult your local branch for availability and lead time.

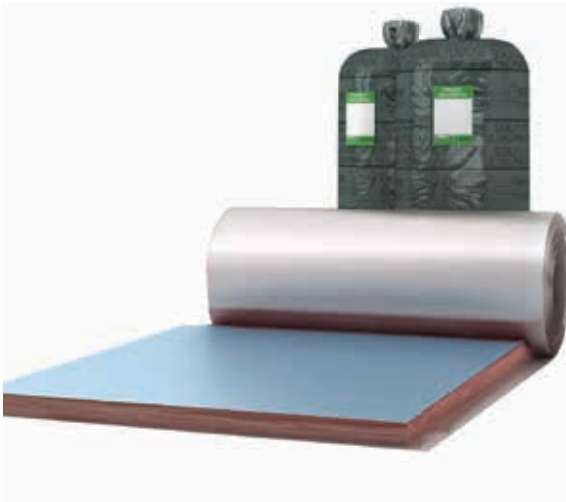
Material R-value	Product code	Nominal thickness mm	Width mm	Length m	m ² per roll
R1.3	905150	55	1200	15	18
	905200		1200	20	24
	905300		1200	30	36
R1.8	907150	75	1200	15	18
	907200		1200	20	24
	907250		1200	25	30
R2.3	908922	100	1200	10	12
R2.5	908100	100	1200	10	12
	908920		1200	15	18
R3.0	909100	130	1200	10	12
R3.2	909203		1200	10	12
R3.6	909306		1200	6.5	7.8

Pink® and Pink® Batts are registered trademarks of Owens Corning used under licence by Fletcher® Insulation

Permastop® Tropic Building Blanket

Fletcher®
Insulation

Building Better, Together.



Designed for: Use in Australia's hot and humid tropical regions in residential and commercial metal clad roof and wall applications to provide greater condensation protection, while also providing excellent thermal and acoustic benefits for the building.

Made from: Comprised of Pink® glasswool blanket substrate that is faced on both sides with an anti-glare facing one side and a reflective Sisalation® laminate on the other side.

- ✓ Next day delivery service available*
- ✓ 10 year product warranty
- ✓ Aids in minimising the risk of condensation for Australia's northern tropical climates
- ✓ Satisfies Bushfire Attack Level (BAL) requirements of 0-40 in roof applications and 0-FZ in wall applications (in accordance with AS3959 – 2009)
- ✓ Reduces sound transfer from the external roof environment into the building (i.e. rain and overhead traffic)
- ✓ Designed for all year round comfort reducing energy consumption and saving you money
- ✓ Manufactured from up to 80% recycled glass
- ✓ Faced with industry leading Sisalation® reflective foil laminate
- ✓ Each layer of Sisalation® incorporates a 150mm overlap positioned in an alternating configuration
- ✓ Available in custom lengths to improve installation efficiency

Hints

- If a spacer is required use Roof Razor® Cyclonic, page 15
- The heavier the duty of foil used, the better the quality and less likely to damage over time and during install
- Allow sufficient space for the insulation to recover to its normal thickness to ensure its designed effectiveness
- Permastop® Tropic Building Blanket is not a sarking membrane, hence should not be lapped into the gutter
- The product is not suitable for applications where subject to wetting or excessive moisture

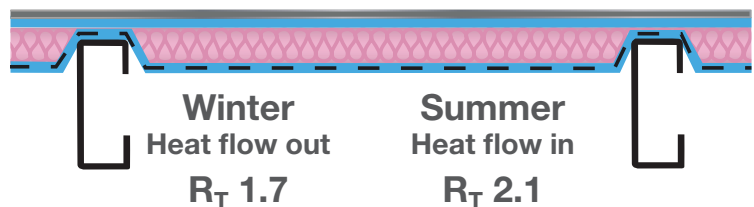
Q&A

Can I use an insulation spacer with Permastop® Tropic Building Blanket?

In applications where an insulation spacer is required, Fletcher Insulation recommends Permastop® Building blanket is installed and an additional layer of Sisalation® Metal Roof should then be laid above the blanket and spacer to achieve the same benefits Permastop® Tropic provides.

System Example

Flat Metal Roof



Flat metal roof at 0° to 5° pitch, safety mesh over purlins. R1.4 60mm Permastop® Tropic double faced blanket laid over safety mesh, blanket allowed to recover to its nominal thickness. Anti-glare foil side should face upwards to the metal roof.

Facing	Material R-value	Product code	Nominal thickness mm	Width mm	Length m	m ² per roll
Double-sided Sisalation® Facing Foil Light Duty (LD)	R1.4	910239	60	1200	15	18
	R1.8	913202	75	1200	15	18
Single-sided Sisalation® Facing Foil Light Duty (LD)	R1.3	911310	55	1200	20	24
	R1.8	911312	75	1200	15	18
Single-sided Sisalation® Facing Foil Heavy Duty (HD)	R2.5	230100	100	1200	10	12

* Double-sided Permastop® Tropic Building Blanket available to Brisbane and Townsville metro areas for next working day delivery service only. Single-sided Permastop® Tropic Building Blanket available to Darwin metro areas for next working day delivery service only.

Other options and facings may be available, consult your branch for availability and lead times.

Pink® and Pink® Batts are registered trademarks of Owens Corning used under licence by Fletcher® Insulation.

Permatuff Building Blanket



Designed for: Use in residential and commercial metal clad roof and wall applications. Providing excellent thermal and acoustic properties by reducing heat loads entering a building. Minimising the internal reverberation and flow of unwanted nuisance noise generated from adjacent buildings/rooms and/or the external environment.

Made from: Comprised of Pink® glasswool blanket substrate that is faced on one side with a strong quality polyweave Sisalation® reflective foil laminate.

- ✓ Next day delivery service available*
- ✓ 10 year product warranty
- ✓ Aids in minimising the risk of condensation
- ✓ Features a stronger, more puncture resistant Sisalation® reflective polyweave backing
- ✓ Satisfies Bushfire Attack Level (BAL) requirements of 0-40 in roof applications and 0-FZ in wall applications (in accordance with AS3959 – 2009)
- ✓ Reduces sound transfer from the external roof environment into the building (i.e. rain and overhead traffic)
- ✓ Designed for all year round comfort reducing energy consumption and saving you money
- ✓ Manufactured from up to 80% recycled glass
- ✓ Available in custom lengths to improve installation efficiency

Hints

- Allow sufficient space for the insulation to recover to its normal thickness to ensure its designed effectiveness
- Permatuff Building Blanket is not a sarking membrane, hence should not be lapped into the gutter
- The product is not suitable for applications where subject to wetting or excessive moisture

Support Spacing	Sisalation® Duty
≤600	Light Duty (LD)
≤900	Medium Duty (MD)
≤1200	Heavy Duty (HD)
>1200	Use support mesh with any of the above

Q&A

What way should Permatuff Building Blanket be rolled out when installing?

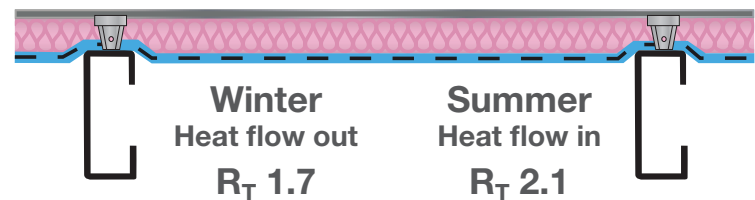
Permatuff Building Blanket is typically installed with the reflective surface facing downwards into the air-space below, Fletcher Insulation recommends installing the blanket as per the standard procedures.

What is the lead time for custom cut lengths?

2-5 day from order cut-off plus transit times, consult your local branch for information.

System Example

Flat Metal Roof



Flat metal roof at 0° to 5° pitch, safety mesh over purlins. R1.4 60mm Permatuff building blanket laid over safety mesh, blanket allowed to recover to its nominal thickness by using 25mm FI XPS Foam insulation spacer.

Material R-value	Product code	Nominal thickness mm	Width mm	Length m	m ² per roll
R1.3	905151	55	1200	15	18
	905201		1200	20	24
R1.8	905156	75	1200	15	18
	905202		1200	20	24
R2.5	905205	100	1200	10	12
R3.0	905208	130	1200	10	12
R3.2	905212	130	1200	10	12
R3.6	905216	130	1200	6.5	7.8

*Next day delivery within branch metro areas.

The colour PINK, Pink® and Pink® Batts are registered trademarks of Owens Corning and used under licence by Fletcher® Insulation Pty Limited.



Designed for: Use in a variety of applications such as factories, warehouse, shopping centres, schools, office blocks and sheds to provide fall protection for roof installers and offers long-term fall protection for maintenance and repair workers.

Made from: High quality, galvanised Australian steel wire.

- ✓ Next day delivery service available*
- ✓ 10 year product warranty
- ✓ Uniform strength and consistent quality over the length of the mesh
- ✓ Complies with all Australian State and Territory Codes of Practice (Safe Work on Roofs Part 1: Commercial and Industrial Buildings)
- ✓ Exceeds the 450 MPa tensile requirement (AS/NZS 4389-1996) at 500-700 MPa making it a stronger and safer
- ✓ Where a decorative finish is required black or white options are available.
- ✓ Available in custom lengths to improve installation efficiency

Hints

- Before installation check with your local code for safe work on roofs
- Mesh should be pulled taut to ensure a natural lag between each purlin

Product	Product code	Width mm	Length m	Wire diameter mm	Mesh size mm
Galvanised	332600	1800	50	2	300 x 150
	332601	2250	50	2	300 x 150
Galvanised with white PVC	332950	1800	50	2	300 x 150
Galvanised with black PVC	332900	1800	50	2	300 x 150

*Next day delivery within branch metro areas.





Designed for: Use in commercial metal roof systems applications with a pitch of no more than 22.5°. The insulation spacer sits between the roof structure and the external cladding membrane to create the space required for insulation blanket to recover to its full nominal thickness between purlins.

Made from: High tensile galvanised steel.

- ✓ Next day delivery service available*
- ✓ 10 year product warranty
- ✓ Satisfies NCC, Section J Energy Efficiency Provisions
- ✓ Suitable for use in cyclonic regions
- ✓ 726mm length to match typical width of roof sheets
- ✓ Roof sheet clips to be attached to Roof Rack® off-site, thus improving on-site installation efficiencies
- ✓ Suitable for use with the following concealed fixed roof systems:
 - Lysaght Klip-Lok® 700
 - Stramit Speed Deck Ultra®
 - Fielders King Klip® 700
 - Steeline Lokdek® 680
 - Metrol Metlok® 700

Hints

- For pierced fixed roof systems, Fletcher Insulation's Roof Razor® is recommended
- Roof Rack® is available in two heights to suit most commonly used blanket thicknesses:
 - 75mm Roof Rack® is generally recommended for use with 100mm thick Building Blanket
 - 100mm Roof Rack® is generally recommended for use with 130mm thick Building Blanket

Q&A

By not using a spacer, how much will it diminish the system R-value?

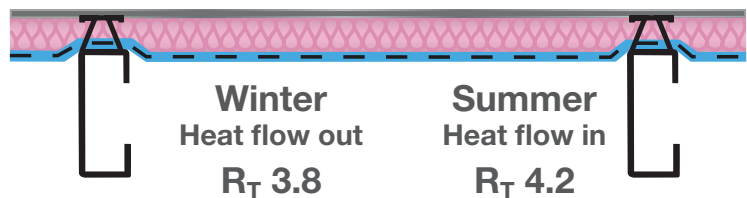
Failure to incorporate an insulation spacer into the design of a system can significantly compromise the thermal performance and thus energy efficiency of a building, diminishing the Material R-value of the insulation by up to 80%.

Product	Product code	Height mm	Length mm	Pieces per pack	LM per pack
Roof Rack®	393076	75	726	20	14.52
	393077	100	726	20	14.52

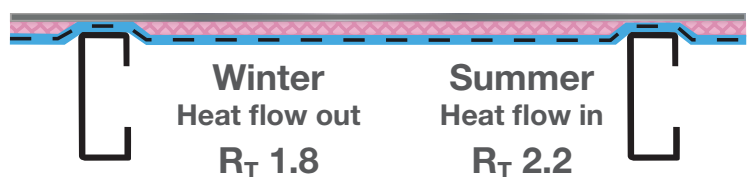
Product	Product code	Height mm	Pieces per pack
End Clip	394075	75	50
	394076	100	50

System Example

Flat Metal Roof with Spacer



Flat Metal Roof without Spacer



Flat metal roof at 0° to 5° pitch, safety mesh over purlins. 130mm Permastop® Building blanket faced with silver foil R3.6 laid over safety mesh, blanket allowed to recover to its nominal thickness by using 75mm FI XPS Foam insulation spacer. Foil side of blanket should face into the airspace below.

*Next day delivery within branch metro areas.

The colour PINK, Pink® and Pink® Batts are registered trademarks of Owens Corning and used under licence by Fletcher® Insulation Pty Limited.



Designed for: Use in commercial metal roof system applications. The insulation spacer sits between the roof structure and the external cladding membrane to create the space required for insulation blanket to recover to its full nominal thickness between purlins.

Made from: High tensile galvanised steel.

- ✓ Next day delivery service available*
- ✓ 10 year product warranty
- ✓ Satisfies NCC, Section J Energy Efficiency Provisions
- ✓ Suitable product option for use in cyclonic regions
- ✓ Impressive national reputation built on ease and speed of installation
- ✓ Suitable for use on roofs with a pitch up to and including 30°
- ✓ Compatible with both pierced and concealed fix roof cladding
- ✓ 1200mm length to match typical Permastop® Building Blanket width, allowing for a direct line of sight to the purlin
- ✓ Cuts through insulation to give a direct connection to the purlin, ensuring that over time the bracket will not loosen as a result of vibration and movement
- ✓ Compatible with polyester blanket, Roof Razor® pinches the blanket tight, the fastener can puncture the polyester without becoming tangled

Hints

- Roof Razor® is available in two heights to suit most commonly used blanket thicknesses:
 - 85mm Roof Razor® is generally recommended for use with 100-120mm thick Building Blanket
 - 115mm Roof Razor® is generally recommended for use with 130-145mm thick Building Blanket
- For applications requiring a spacer solution suitable for timber battens, Roof Razor® is supplied without pre-loaded screws:
 - For 85mm Roof Razor® Fletcher Insulation recommends screws that are 62mm long + penetration depth
 - For 115mm Roof Razor® Fletcher Insulation recommends screws that are 92mm long + penetration depth

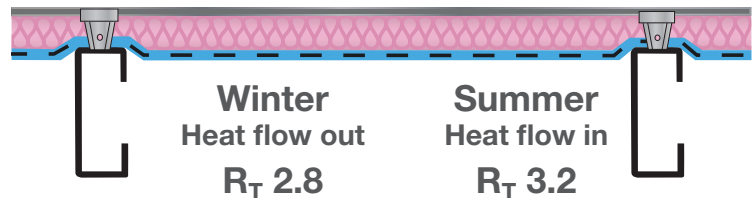
Q&A

By not using a spacer, how much will it diminish the system R-value?

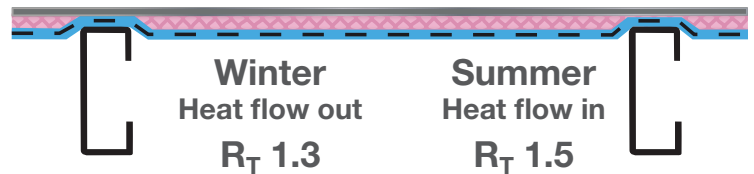
Failure to incorporate an insulation spacer into the design of a system can significantly compromise the thermal performance and thus energy efficiency of a building, diminishing the Material R-value of the insulation by up to 80%.

System Example

Flat Metal Roof with Spacer



Flat Metal Roof without Spacer



Flat metal roof at 0° to 5° pitch, safety mesh over purlins. 100mm Permastop® Building blanket faced with silver foil R2.5 laid over safety mesh, blanket allowed to recover to its nominal thickness by using 85mm Roof Razor® insulation spacer. Foil side of blanket should face into the airspace below.

Product	Product code	Height mm	Length mm	Pieces per pack	LM per pack
Roof Razor® Standard; pre-loaded screws	396291	85	1200	6	7.2
	396292	115	1200	6	7.2
Roof Razor® Standard; not pre-loaded screws (for fixing to timber battens)	396295	85	1200	6	7.2
	396296	115	1200	6	7.2
Roof Razor® Cyclonic; pre-loaded screws	396293	85	1200	6	7.2
	396294	115	1200	6	7.2

*Next day delivery within branch metro areas.

The colour PINK, Pink® and Pink® Batts are registered trademarks of Owens Corning and used under licence by Fletcher® Insulation Pty Limited. Roof Razor® is a registered trademark of Vilno Group Pty Limited.

Pink® Partition



Designed for: Thermal and acoustic insulation for walls and ceilings to suit metal stud constructions, available in a range of densities; 11, 14, 24 and 32kg/m³ meeting the industry needs.

Made from: Lightweight, flexible and resilient 80% recycled glass.

- ✓ 10 year product warranty
- ✓ Various densities, material R-values and dimensions to suit steel stud sizes & building requirements
- ✓ Reduces sound transfer from the external environment into the building or between adjacent rooms
- ✓ Achieves excellent Rw and Rw+Ctr ratings
- ✓ Non-combustible in accordance with AS/NZS1530 Part 1 and Part 3 reducing fire risk
- ✓ Recover to their natural thickness, fast
- ✓ Precut batts are friction fitted and will remain in place without slumping for continual thermal performance
- ✓ Comfortable to handle during installation
- ✓ Safe to use with allergy sufferers due to low VOC
- ✓ Resistant to bacteria and micro-organism growth

Hints

- The higher the density, the better the acoustic performance
- Allow sufficient space for the insulation to recover to its normal thickness to maintain its thermal effectiveness
- Can be easily cut down to requirement using a sharp retractable blade knife
- Ensure all areas are covered to avoid any thermal and acoustic leakage

Q&A

What is Rw?

The National Construction Code (NCC) has adopted the Weighted Sound Reduction Index (Rw) as a measure of the sound isolating properties of building elements. A wall system with a higher Rw rating isolates sound better than a wall system with a lower Rw rating.

System Example

Steel Stud Partition Wall

Rw 35dB

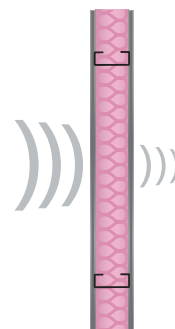
Rw 38dB

Rw 42dB

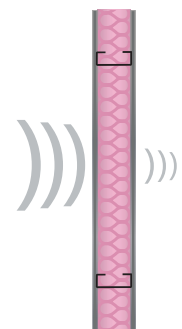
At Rw 35, loud speech can be heard but not understood
At Rw 42, loud speech can be heard only as a murmur



92mm steel studs & 10mm plasterboard on either side.



92mm steel studs with Pink Partition 11 90mm within the cavity & 10mm plasterboard on either side.



92mm steel studs with Pink Partition 32 90mm within the cavity & 13mm plasterboard on either side.

An increase of 6 points in Rw rating is a reasonable increase in perceived sound isolating performance.

Rw Source: USG Boral Systems+ April 2015.

The colour PINK, Pink® and Pink® Batts are registered trademarks of Owens Corning and used under licence by Fletcher® Insulation Pty Limited.

	Material R-value	Product code	Nominal thickness mm	Width mm	Length mm	Pieces per pack	Coverage per pack m ²	Packs per bale
Pink® Partition 11	R1.2	903442	50	450	1200	32	17.28	5
		903443			2700	24	29.16	4
		903444		600	1200	32	23.04	5
		903445			2700	16	25.92	4
	R1.8	903446	75	450	1200	16	8.64	6
		903447			2700	24	29.16	4
		903448		600	1200	16	11.52	6
		903449			2700		25.92	4
	R2.1	903450	90	450	1200	16	8.64	5
		903451			2700	24	29.16	4
		903452		600	1200	16	11.52	5
		903453			2700	16	25.92	4
	R2.5	903458	110	450	1200	16	8.64	5
		903454		600	1200	16	11.52	5
903457		2700			10	16.20	4	
R3.5	903463	165	600	1200	10	7.20	5	
Pink® Partition 14	R1.3	903515	50	450	1200	24	12.96	5
		903516			2700		29.16	4
		903517		600	1200	24	17.28	5
		903518			2700	16	25.92	4
	R1.9	903715	75	450	1200	16	8.64	5
		903716			2700	18	21.87	4
		903717		600	1200	16	11.52	5
		903718			2700	12	19.44	4
	R2.2	903915	90	450	1200	14	7.56	5
		903916			2700	15	18.23	4
		903919		600	1200	14	10.08	5
		903918			2700	10	16.20	4
Pink® Partition 24	R0.7	901022	25	600	2700	20	32.40	4
	R1.1	901023	38	600	2700	12	19.44	4
	R1.4	903551	50	450	1200	12	6.48	5
		903552		600	1200	12	8.64	5
		901024			2700		19.44	4
	R1.8	901025	64	600	2700	10	16.20	4
	R2.1	903553	75	450	1200	10	5.40	4
		903554		600			7.20	
	R2.5	903555	90	450	1200	8	4.32	4
		903556		600			5.76	
	R2.8	903557	100	450	1200	6	3.24	4
		903558		600			4.32	
Pink® Partition 32	R1.5	903650	50	450	1200	12	6.48	5
		903652		600			8.64	
	R2.2	903670	75	450	1200	10	5.40	4
		903672		600			7.20	
	R2.7	903690	90	450	1200	8	4.32	4
		903692		600			5.76	
	R3.0	903600	100	450	1200	6	3.24	4
		903694		600			4.32	

Pink® Partition HD Panels



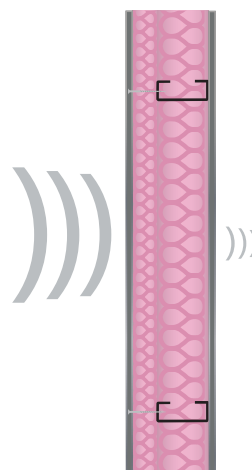
Designed for: Use in commercial metal framed partitions, walls and ceilings.

Made from: Lightweight composite of 80% recycled glass using a thermosetting resin forming a rigid board.

- ✓ 10 year product warranty
- ✓ The high density specification of the panels (96kg/m³ and 168kg/m³) are designed to reduce sound transmission between rooms in commercial building applications
- ✓ Suitable for use in concrete floor systems to create a sound barrier between floors (when installed between the floor membrane and the underside of the concrete slab)
- ✓ Achieves excellent Rw and Rw+Ctr ratings
- ✓ Sanded on one side to provide a smooth aesthetic finish when a textile fabric is adhered to its surface
- ✓ Safe to use with allergy sufferers due to low VOC
- ✓ Resistant to bacteria and micro-organism growth

Acoustic Example Steel Stud Partition Wall

Rw 45dB



92mm steel studs with Pink® Partition 32 90mm within the cavity. Pink® Partition HD Panel 25mm on one side of the stud covered by 13mm plasterboard on either side.

Hints

- The higher the density, the better the acoustic performance
- Allow sufficient space for the insulation to recover to its normal thickness to maintain its thermal effectiveness
- Can be easily cut down to requirement using a sharp retractable blade knife
- Ensure all areas are covered to avoid any thermal and acoustic leakage

Q&A

What is the availability?

Availability by special order. Consult your local branch for minimum order quantity and lead time.

Product	Product code	Nominal thickness mm	Width mm	Length mm	Pieces per pack	Coverage per pack m ²
Pink® Partition 96	940120	25	1200	2400	Supplied as 50 sheets per pallet	144
	940125			3000		180
Pink® Partition 168	903668	13	1200	914	10	10.97

The colour PINK, Pink® and Pink® Batts are registered trademarks of Owens Corning and used under licence by Fletcher® Insulation Pty Limited.

Polyester Acoustic Partition Blanket



Designed for: Use in commercial applications between partition walls to reduce noise transfer between rooms.

Made from: 100% pure polyester with 45% recycled PE plastics.

- ✓ 10 Year product warranty
- ✓ Various densities, material R-values and dimensions to suit steel stud sizes & building requirements
- ✓ Reduces sound transfer ideal for providing privacy between offices, boardrooms, shops etc
- ✓ Easy installation, can be torn straight across its width

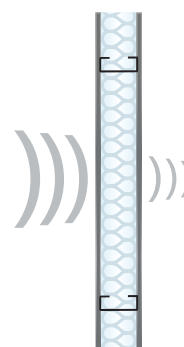
System Example Steel Stud Partition Wall

Rw 32dB



82mm steel studs & 13mm plasterboard on either side
At Rw 30, loud speech can be heard easily

Rw 37dB



82mm steel studs with ISB4 Partition Blanket within the cavity & 13mm plasterboard on either side.

An increase of 5 points in Rw rating is a reasonable increase in perceived sound isolating performance. At Rw 35, loud speech can be heard but not understood

Q&A

What is the availability?

Availability varies from next day delivery to 10 working days plus transit time, consult your local branch for availability and lead time.

How do I dispose of the left over polyester once I have finished installing the insulation in my home?

Polyester batts are 100% recyclable including the packaging.

Product code	Nominal thickness mm	Rw Improvement*	Width mm	Length m	Pieces per pack	Coverage per pack m ²
335002	50	Rw35	610	16.5	2	20.10
335005	60	Rw36	450	16.5	3	22.30
335003			610	16.5	2	20.10
335007	70	Rw37	450	16.5	3	22.30
335004			610	16.5	2	20.10
335010	80	Rw38	610	16.5	2	20.10
335011	90	Rw39	610	12	2	14.60

Note: Branches may offer alternative product range.

Pink® Batts



Designed for: Thermal insulation of walls and ceilings in residential building applications. It is the trusted choice when it comes to constructing new homes or retrofitting existing buildings.

Made from: Lightweight, flexible and resilient 80% recycled glass.

- ✓ Next day delivery service available*
- ✓ Lifetime consumer warranty†
- ✓ Non-combustible in accordance with AS/NZS1530 Part 1
- ✓ Recover to their natural thickness, fast
- ✓ Batts are friction fitted and will remain in place without slumping for continual thermal performance
- ✓ Comfortable to handle during installation
- ✓ Safe to use with allergy sufferers due to low VOC
- ✓ DIY friendly
- ✓ Robust packaging will withstand the rigours of any job site



Hints

- The higher the material R-value, the more effective the insulation
- R2.5 high density wall batts are designed specifically to fit within 90mm stud
- 430mm and 580mm wide batts are designed to suit timber studs, 600mm batts are designed to suit steel studs
- Allow sufficient space for the insulation to recover to its nominal thickness to maintain its thermal effectiveness
- Can be easily cut down to requirement using a sharp retractable blade knife
- Ensure all areas are covered to avoid any thermal leakage including residential access holes

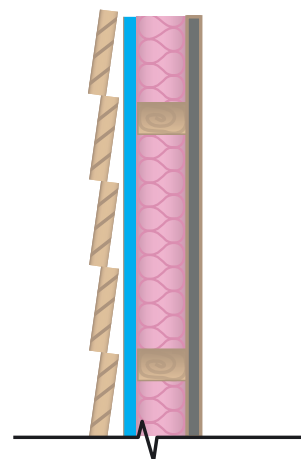
Q&A

Is stringing the external timber studs necessary when installing wall batts?

Yes, unless Sisalation® Tuffwrap™ is installed on the outside of the frame. This is to prevent the wall batts from touching the external cladding.

System Example Lightweight Cladding

Winter **Summer**
Heat flow out **Heat flow in**
R_T 3.0 **R_T 2.7**



Lightweight cladding (material R-value 0.1 assumed). Directly fixed over Sisalation® Vapawrap™ or Sisalation® Tuff Wrap™ breather, bright side facing stud cavity. 90mm timber stud with Pink® Batts R2.5HD 90mm insulation installed in cavity and 10mm plasterboard lining.

*Next day delivery within branch metro areas.

† If installed as per manufacturers guidelines, check warranty information for further details.

The colour PINK, Pink® and Pink® Batts are registered trademarks of Owens Corning and used under licence by Fletcher® Insulation Pty Limited.

	Material R-value	Product code	Nominal thickness mm	Width mm	Length mm	Batts per pack	m ² per pack	Coverage per pack m ²	Packs per bale
Wall	R1.5	900166	70	430	1160	24	12.0	13.6	6
		900167		580	1160	24	16.2	18.2	6
	R2.0	901217	90	430	1160	24	12.0	13.6	5
		901218		580	1160	24	16.2	18.2	5
	R2.0 HD	900210	70	430	1160	12	6.0	6.8	6
		900211		580	1160	12	8.1	9.1	6
		900213		600	1200	12	8.6	9.7	6
	R2.5 HD	900253	90	430	1160	12	6.0	6.8	5
		900256		580	1160	12	8.1	9.1	5
900214		600		1200	12	8.6	9.7	6	
Ceiling	R2.5	901254	130	430	1160	16	8.0	9.0	6
		901255		580	1160	16	10.8	12.2	6
	R3.0	901304	155	430	1160	16	8.0	9.0	5
		901305		580	1160	16	10.8	12.2	5
	R3.5	901354	175	430	1160	16	8.0	9.0	4
		901355		580	1160	10	6.7	7.6	6
	R4.0	901404	195	430	1160	10	5.0	5.6	5
		901403		580	1160	10	6.7	7.6	6
	R5.0	901504	215	430	1160	8	4.0	4.5	5
		901505		580	1160	8	5.4	6.1	5
	R6.0	901604	250	430	1160	6	3.0	3.4	5
		901605		580	1160	6	4.0	4.5	5



Pink® NoiseSTOP with Durasorb® Facing



Designed for: Use in commercial wall and ceiling applications requiring thermal performance, acoustic control and where a black aesthetic finish is desired. It is also suitable for installation behind perforated metal linings to provide acoustic absorption and to conceal the substrate behind the metal lining for an enhanced visual appearance.

Made from: Lightweight composite of 80% recycled glass using a thermosetting resin forming a semi rigid board faced with a black poly-woven fabric adhered to one side.

- ✓ 32kg Density
- ✓ 10 year product warranty
- ✓ Aesthetically pleasing, non-opaque black finish
- ✓ Provides exceptional acoustic performance ideal for providing privacy between offices, boardrooms, shops etc
- ✓ Ideal thermal properties for controlling temperature fluctuations of concrete roofs, floors and walls
- ✓ Resistance to bacteria and micro-organism growth

Hints

- Use Pink® NoiseSTOP Durasorb® tape to seal joins
- Allow sufficient space for the insulation to recover to its normal thickness to maintain its thermal effectiveness
- Ensure all areas are covered to avoid any thermal and acoustic leakage

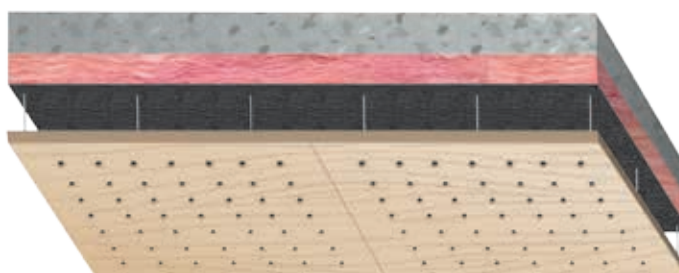
Q&A

What is the availability?

Available by special order. Consult your local branch for minimum order quantity and lead time.

Install Example

Underslab with suspended perforated ceiling application



Material R-value	Product code	Nominal thickness mm	Width mm	Length mm	Pieces per pack	m ² per Pack
R1.2	240734	38	1200	2400	6	17.3
	240745		1500			21.6
R1.5	240735	50	1200	2400	5	14.4
	240746		1500			18
R2.3	240736	75	1200	2400	3	8.6
	240747		1500			10.8
R2.5	240748	100	1200	2400	2	5.76

Install using matching tape

Product	Product code	Width mm	Length m	Rolls per carton
Pink® NoiseSTOP Durasorb® tape	318833	70	50	16

The colour PINK, Pink® and Pink® Batts are registered trademarks of Owens Corning and used under licence by Fletcher® Insulation Pty Limited.



Designed for: Use in commercial applications where thermal properties are pivotal in controlling temperature fluctuations of concrete roofs, floors and walls.

Made from: Lightweight composite of 80% recycled glass using a thermosetting resin forming a semi rigid board faced with a Sisalation® reflective foil laminate adhered to one side.

- ✓ 10 year product warranty
- ✓ Designed for use in soffit applications
- ✓ Provides exceptional acoustic performance
- ✓ Faced with industry leading Sisalation® foil
- ✓ Resistance to bacteria and micro-organism growth

Hints

- Use Vapastop® 833 reinforced tape to seal joints
- Allow sufficient space for the insulation to recover to its normal thickness to maintain its thermal effectiveness
- Ensure all areas are covered to avoid any thermal and acoustic leakage

Q&A

What is the availability?

Available by special order. Consult your local branch for minimum order quantity and lead time.

How many pins are required to fix Pink® Thermal Slab?

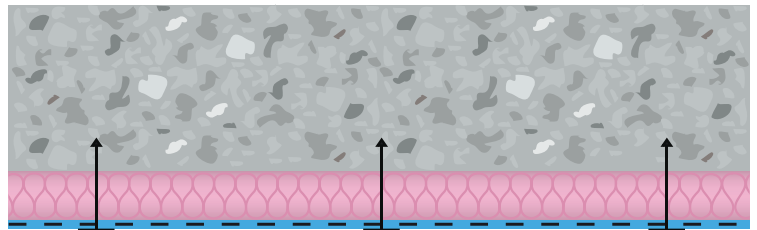
It is recommended to use a minimum of 8 pins per sheet.

System Example

Soffit underslab

Winter
Heat flow out
R_T 3.5

Summer
Heat flow down
R_T 3.1



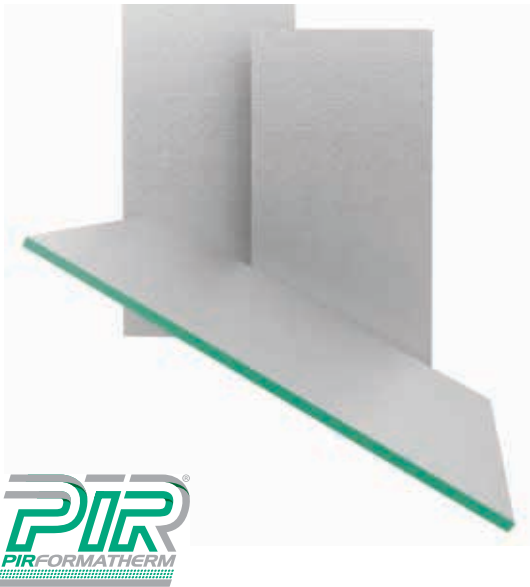
100mm concrete, direct fixed 150mm thick Pink® Thermal Slab R3.0 insulation (reflective surface facing into the airspace below).

Facing	Material R-value	Product code	Nominal thickness mm	Width mm	Length mm	Pieces per pack	m ² per sheet	Group no. AS5637*
Sisalation® 450 Facing Foil Heavy Duty (HD)	R1.5	941107	50	1200	2400	5	14.4	1
	R2.0	941110	66	1200	2400	3	8.64	
	R2.3	941108	75	1200	2400	3	8.64	
	R3.0	941109	100	1200	2400	2	5.76	

*AS5637.1:2015 : Determination of fire hazard properties - Wall and ceiling linings.

*white facing available upon request. MOQ's & lead times apply.

PIRFORMATHERM®



Designed for: Use in buildings as a continuous thermal, reflective and moisture barrier across various applications including, but not limited to soffit, stud/masonry/cavity wall, vaulted ceilings, attics and spaces where high insulation values are required.

Made from: Thermoset polyisocyanurate foam core with a reflective foil laminate on both sides forming a rigid board.

- ✓ 10 year product warranty
- ✓ Excellent fire retardant properties
- ✓ Uniform density distribution for dimensional stability
- ✓ High compressive strength
- ✓ Lightweight, rigid foam composition allows for ease of installation
- ✓ Eliminates the need for extra deep framing
- ✓ Superb water vapour performance
- ✓ Environmentally friendly (no CFC's are used in manufacture)
- ✓ Low emissivity foil facings offering enhanced thermal performance within cavity airspaces
- ✓ Available in custom lengths

Hints

- Provides impressive fire resistance characteristics, dramatically reducing the hazards associated with some insulation foams that melt at low temperatures in the event of fire
- Leaving an air space can provide an additional R-value by retarding radiant heat flow, refer to FletcherSpec® Pro for further specification details
- Use Vapastop® 883 foil tape to seal the exposed ends of the sheet and / or around the brick ties if wanting to achieve a full vapour proof barrier

Q&A

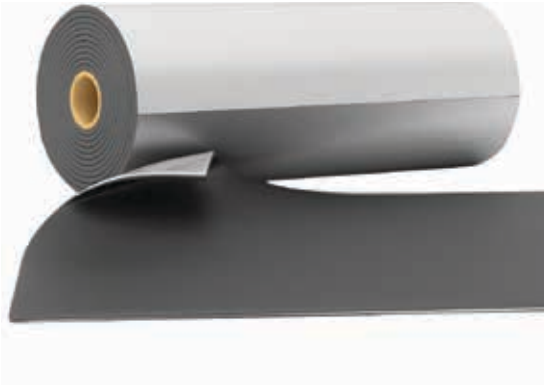
What is the availability?

Consult your local branch for minimum order quantity and lead time.

Material R-value	Product code	Nominal thickness mm	Width mm	Length mm	Coverage m ² per sheet
R1.0	395750	20	1200	2400	2.88
R1.25	395627	25	1200	2400	2.88
R1.5	395628	30	1200	2400	2.88
R2.0	395630	40	1200	2400	2.88
R2.5	395632	50	1200	2400	2.88
R3.0	395634	60	1200	2400	2.88
R3.5	395636	70	1200	2400	2.88
R3.75	395637	75	1200	2400	2.88
R4.0	395638	80	1200	2400	2.88
R4.5	395640	90	1200	2400	2.88
R5.0	395642	100	1200	2400	2.88

MOQ and lead times apply. Contact Fletcher® Insulation for product codes relating to alternative facing options and custom lengths.

Loaded Vinyl Barrier



Designed for: Use in applications where space may be limited to reduce unwanted noise transmission through ceilings, walls, floors, office partitions, machinery enclosures and/or ductwork. Can also be draped to make portable acoustic curtains and screens.

Made from: Foil faced, heavy mass-loaded vinyl noise barrier with a reinforced fabric backing.

- ✓ Ideal to fabricate around pipe penetrations, ducting and cabling
- ✓ High tensile strength, resistant to tearing
- ✓ Free from lead, odour-producing oils and bitumen
- ✓ Excellent fire retardant properties
- ✓ Easy to cut, sew and mechanically fasten into position
- ✓ Resistant to most chemicals, solvents and petrol
- ✓ Safe to use with allergy sufferers due to low VOC
- ✓ Reduces sound transfer from the external roof environment into the building (i.e. rain and overhead traffic)
- ✓ Ideal for home theatre rooms, office partitions and meeting rooms
- ✓ Can be wrapped around noisy pipes, i.e. fluid or gas pulsation in chemical, petrochemical and waste water treatment plants
- ✓ Can be installed around the outside of metal air ducts to reduce noise breaking out
- ✓ Can be laminated onto lightweight structures to dampen vibration and reduce airborne noise

Hints

- Can be easily cut down to requirement using a sharp retractable blade knife
- Also known as Soundbaffle
- Avoid long term exposure over 150°C
- The foil facing also allows reinforced foil tapes to be used to join two pieces of Mass Loaded Vinyl Barrier together when overlapped

Q&A

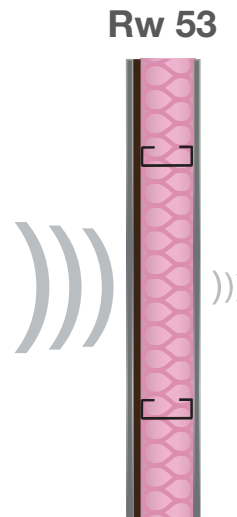
What is the availability?

Availability varies from next day delivery to 10 working days plus transit time. Consult your local branch for availability and lead times.

What installing techniques can I use?

Material can be nailed, screwed, stapled or can be reinforced, grommeted and hung like a curtain.

Acoustic Example Steel Stud Partition Wall

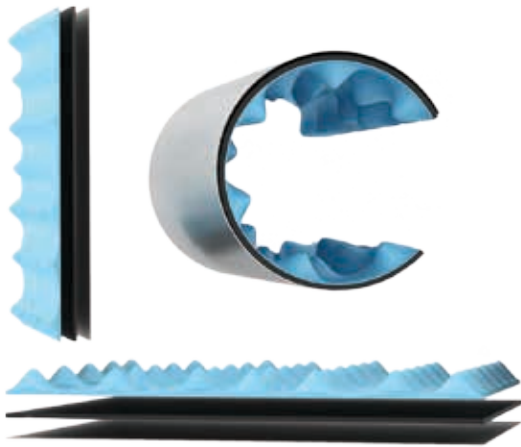


92mm steel studs with Pink[®] Partition 32 90mm within the cavity & 6kg/m² Mass Loaded Vinyl Barrier on one side of the studs covered by 13mm standard plasterboard on either side.

Barrier weight kg/m ²	Product code	Thickness mm	Width mm	Length m	m ² per roll	Roll weight kg	Rolls per pallet
4	330014	2.0	1350	5	6.7	27	20
6	330006	3.0	1350	5	6.7	41	20
8	330008	4.0	1350	5	6.7	54	30

Other options may be available, consult your branch for availability and lead times.

Pipe Acoustic Lagging



Designed for: Use around ducts, rainwater or waste pipes to reduce noise levels. Satisfies NCC requirements for habitable areas in residential and multi-residential buildings.

Made from: Reinforced aluminium foil skin applied to a 5kg/m² flexible loaded vinyl barrier backed with 25mm thick convoluted, hydrolysis resistant, acoustic foam.

- ✓ Maximises noise control by providing high sound absorption (reverberation control) and superior transmission loss
- ✓ Highly flexible, allowing it to conform to the smallest diameter pipes & bends (has no memory)
- ✓ Conforms well to corners and irregular surfaces
- ✓ Excellent fire retardant properties
- ✓ Broad operating temperature range; max 120°C
- ✓ High resistance to heat flow (i.e. low thermal conductivity)
- ✓ Reduces the noise in hydraulic and waste pipes by up to 25dB(A)
- ✓ Performance is not adversely affected by contact with water
- ✓ Easy to cut and install into tight applications
- ✓ Safe to use with allergy sufferers due to low VOC
- ✓ Resistant to bacteria and micro-organism growth

Hints

- Also known as Soundlag 4525C
- To satisfy NCC requirements the duct or waste pipe must be separated from the rooms of any sole-occupancy unit by construction with an Rw+Ctr (airborne) not less than 40 if the adjacent room is a habitable room
- Can be easily cut down to requirement using a sharp retractable blade knife

Q&A

What is the availability?

Availability varies from next day delivery to 10 working days plus transit time. Consult your local branch for availability and lead times.

Noise radiating from piping and ductwork is a serious issue in modern building construction. How does Pipe Acoustic Lagging solve this?

With just one wrap around the pipe using Pipe Acoustic Lagging sealed with Vapastop® 883 reinforced tape and the addition of a 10mm plasterboard ceiling, the construction will meet and exceed the NCC standards for habitable areas. (Part F5.6 class 2 and 3).

Acoustic Example

Water Waste Pipe



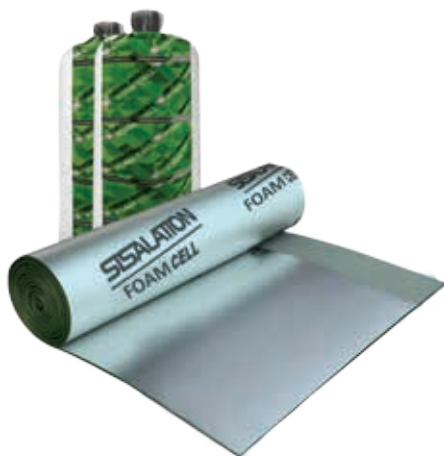
Barrier weight kg/m ²	Product code	Thickness mm	Width mm	Length m	m ² per roll	Roll weight kg	Rolls per pallet
5	330025	25	1350	5	6.70	30	50
5	330026	25	1350	3	4.05	18	50

Other options may be available, consult your branch for availability and lead times.

Sisalation® Foam Cell Multipurpose

Fletcher®
Insulation

Building Better, Together.



SISALATION
FOAM CELL

Designed for: Use as a 3-in-1 multipurpose insulation, vapour barrier and thermal break solution for steel framed wall and roof construction, to reduce the thermal bridging and conductivity between building elements. It is commonly also used in timber framed roof construction for added insulative properties.

Made from: A closed cell, cross-linked XPE foam core encapsulated between two layers of low emissivity reflective laminate, one side with an anti-glare coating.

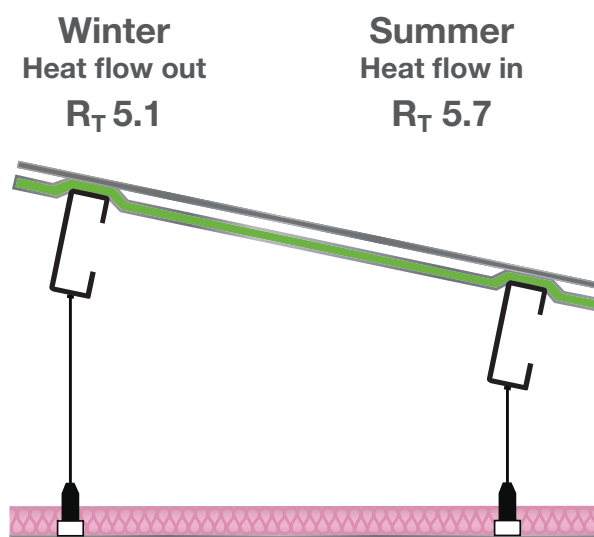
- ✓ Next day delivery service available*
- ✓ 10 year product warranty
- ✓ Suitable for use as a thermal break for steel framed constructions in accordance with NCC requirements
- ✓ Includes a 150mm foil flap to maximise coverage and minimise taping
- ✓ Satisfies Bushfire Attack Level (BAL) requirements of 0-40 in roof applications and 0-FZ in wall applications (in accordance with AS3959 – 2009)
- ✓ Advanced thermal performance reflecting up to 95% radiant heat, allowing for cooler internal conditions in hot and humid climates
- ✓ Incorporates an anti-glare coating on one side for added installation safety
- ✓ Aids in the prevention of condensation
- ✓ Maximum durability and increased tear resistance
- ✓ Allows for easy and rapid installation

Hints

- When taping joins, use a plastic squeegee to assist in applying an appropriate amount of pressure along the seam of the tape
- Store upright in a cool dry place, away from alkaline corrosive materials such as concrete and lime
- Allow a minimum clearance of 50mm around hot-flues to avoid being a fire hazard
- Refer to installation guide for full details

System Example

Pitched Metal Roof

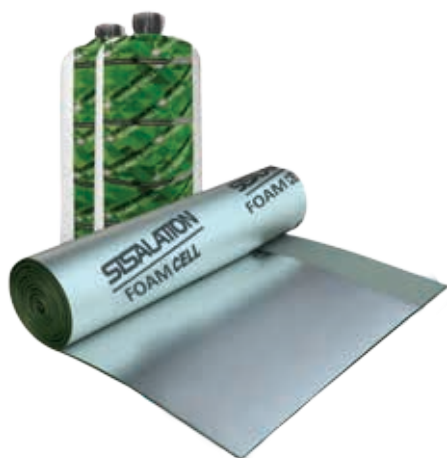


Pitched metal roof between 18° and 35°, Sisalation® Foam Cell Multipurpose under battens, anti-glare facing upwards. Pink® Batts R3.5 175mm insulation, positioned between joists on 10mm plasterboard lining.

Material R-value	Product code	Nominal thickness mm	Width mm	Lap mm	Length m	m ² per roll
R0.2	395264	8.4	1350	150	22.25	30

*Next day delivery within branch metro areas.

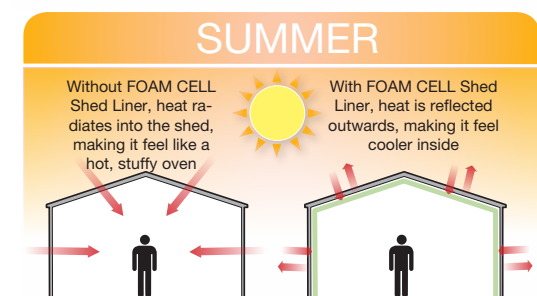
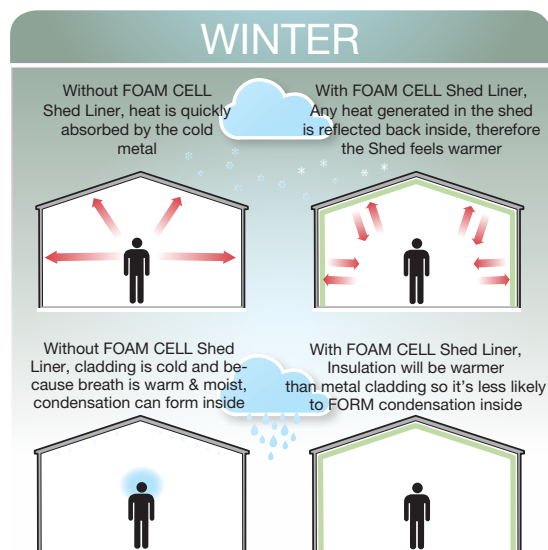
Sisalation® Foam Cell Shed Liner



Designed for: Use in non-habitable shed applications. Minimises the risk of condensation and acts as an effective water and vapour barrier.

Made from: A closed cell, cross-linked XPE foam core encapsulated between an upper and lower layer of reflective foil laminate.

- ✓ Next day delivery service available*
- ✓ 10 year product warranty
- ✓ Suitable for general purpose buildings such as sheds and workshops
- ✓ Includes a 150mm foil flap to maximise coverage and minimise taping
- ✓ Satisfies Bushfire Attack Level (BAL) requirements of 0-40 in roof applications and 0-FZ in wall applications (in accordance with AS3959 – 2009)
- ✓ Advanced thermal performance reflecting up to 95% radiant heat, allowing for cooler internal conditions in hot and humid climates
- ✓ Incorporates an anti-glare coating on one side for added installation safety
- ✓ Rated as Extra Heavy Duty (EHD), providing maximum strength and durability
- ✓ Aids in the prevention of condensation
- ✓ Minimal foam memory allowing for easy and rapid installation



Q&A

Can Sisalation® Foam Cell Shed Liner be used for residential and commercial building applications?

Sisalation® Foam Cell SHED LINER is suitable for use in shed applications only and is not suitable for use in residential or commercial building applications. For residential and commercial building applications, Sisalation® Foam Cell MULTIPURPOSE R0.2 is recommended.

Hints

- When taping joins, use a plastic squeegee to assist in applying an appropriate amount pressure along the seam of the tape
- Store in a cool dry place, away from alkaline corrosive materials such as concrete and lime
- Refer to installation guide for full details

Product code	Nominal thickness mm	Width mm	Lap mm	Length mm	m ² per roll	Roll weight kg
395262	4	1350	150	22.25	30	11.5
395269	4	1350	150	33.44	45	17

*Next day delivery within branch metro areas.



Designed for: Use in a range of commercial and residential building applications. Minimises the risk of condensation and acts as an effective water and vapour barrier.

Made from: A closed cell bubble core encapsulated between an upper and lower layer of reflective foil laminate.

- ✓ Next day delivery service available*
- ✓ 10 year product warranty
- ✓ Suitable for use as a pliable building membrane and underlay in commercial applications
- ✓ Advanced thermal performance reflecting up to 95% radiant heat, allowing for cooler internal conditions in hot and humid climates
- ✓ Maximum durability and increased tear resistance
- ✓ Provides an effective vapour barrier
- ✓ Incorporates an anti-glare coating on one side for added installation safety
- ✓ Rated as Extra Heavy Duty (EHD), providing maximum strength and durability
- ✓ Aids in the prevention of condensation
- ✓ Allows for easy and rapid installation

Hints

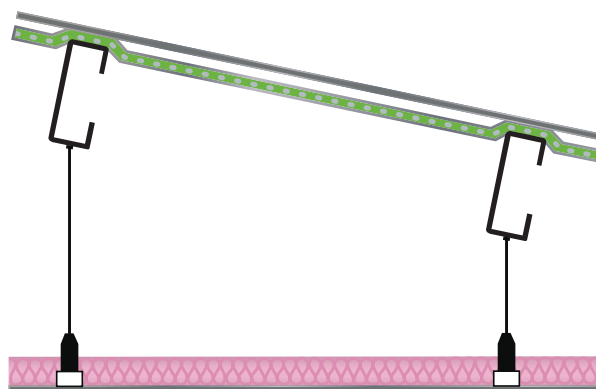
- When taping joins, use a plastic squeegee to assist in applying an appropriate amount of pressure along the seam of the tape
- Store in a cool dry place, away from alkaline corrosive materials such as concrete and lime
- Allow minimum clearance of 50mm around hot-flues to avoid being a fire hazard
- Refer to installation guide

System Example

Flat Metal Roof

Winter
Heat flow out
R_T 4.4

Summer
Heat flow in
R_T 6.2



Flat metal roof between -5° with Sisalation® Bubble Cell laid on safety mesh over purlins. Suspended ceiling system forming 100mm non-ventilated airspace and Pink® Partition 32 100mm insulation laid on 10mm plasterboard.

Product code	Thickness mm	Width mm	Length mm	m ² per roll	Roll weight kg
395215	4	1350	22.25	30	14

*Next day delivery within branch metro areas.

Sisalation® Metal Roof



Designed for: Use as a sarking in commercial metal roof construction.

Made from: Double sided reflective aluminum foil one side with an anti-glare coating, double layered high density kraft paper. HD option is reinforced by yarn.

- ✓ Next day delivery service available*
- ✓ 10 year product warranty
- ✓ Strong, tear and scratch resistant
- ✓ Protects buildings against radiant heat
- ✓ The foil-paper composition reduces the risk of noise generated in metal roofs (otherwise known as “noisy roof syndrome”)
- ✓ Incorporates an anti-glare coating on one side for added installation safety
- ✓ Minimises draughts, thereby allowing bulk wall insulation to perform more effectively
- ✓ Suitable for use in bushfire areas with a Bushfire Attack Level (BAL) of 0 – 40 in accordance with AS3959-2009

Hints

- To maximise performance and service life allow a 40mm sag between battens
- When installed adjacent to a minimum 20mm air space the reflective surface provides increased thermal performance and contributes to the overall energy efficiency of the building
- When overlapped and sealed using Vapastop® 883 aluminium foil tape, provides the dwelling with an effective secondary skin against moisture, vapour, wind, heat and dust penetration into the roof cavity
- Store in a cool dry place, away from alkaline corrosive materials such as concrete and lime

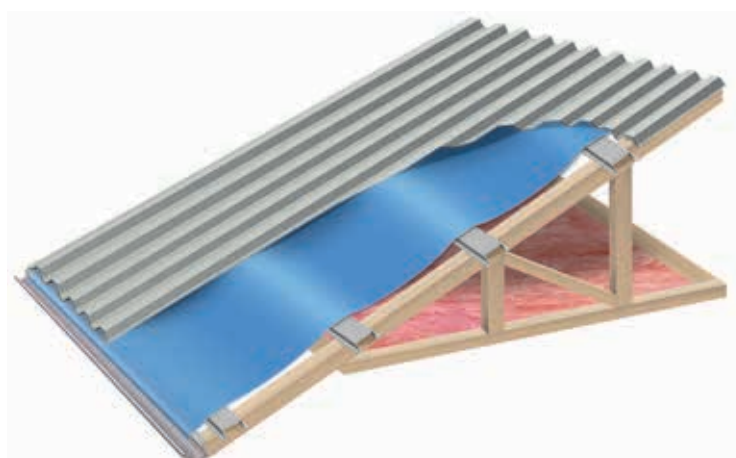
Q&A

Can sarking be retrofitted under existing metal roofs?

Typically Sisalation® Metal Roof is to be installed at the time of the building construction phase. However it can also be installed to existing buildings should the roof be replaced.

Install Example

Metal Roof with Metal Battens



Product	Product code	Width mm	Length m	m ² per roll	Roll weight kg
Sisalation® 433 Metal Roof Medium Duty	951282	1350	30	40.5	12.86
	951260		60	81	25.71
Sisalation® 453 Metal Roof Heavy Duty	952260	1350	60	81	27.8

*Next day delivery within branch metro areas.

Sisalation® Facing Foils



Designed for: Use as a vapour barrier in the lining and lagging of air conditioning ducts, pipes and vessels or as a reflective facing for glasswool batt or blanket substrates.

Made from: Double sided reflective aluminium foil, double layered high density kraft paper. HD option is reinforced by yarn.

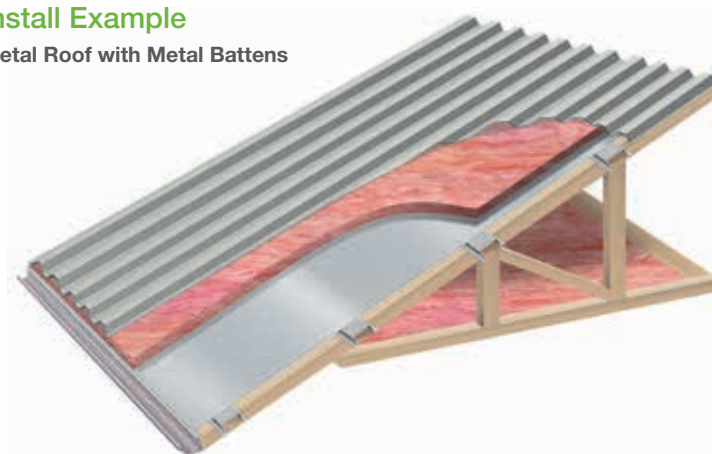
- ✓ 10 year product warranty
- ✓ Suitable for use as a building blanket face for metal deck roofing and underpinning concrete roof slabs
- ✓ Perforated option maximises the acoustic absorption properties of glasswool insulation
- ✓ Advanced thermal performance reflecting up to 95% radiant heat, allowing for cooler internal conditions in hot and humid climates.
- ✓ Strong, tear and scratch resistant
- ✓ When used in conjunction with an airspace, it is an effective thermal insulation material
- ✓ Provides an effective vapour barrier
- ✓ Aids in the prevention of condensation

Hints

- If a Vapour Seal is required, all overlaps and discontinuities should be taped with Sisalation® Vapastop® 883 self-adhesive aluminium tape or as specified

Install Example

Metal Roof with Metal Battens



Product	Product Code	Width mm	Length m	m ² per roll	Roll weight kg
Sisalation® 436 Facing Foil Light Duty Standard (LD)	950230	1350	1000	1350	297
	950232	1500	1000	1500	347
Sisalation® 450 Facing Foil Heavy Duty Standard (HD)	952136	1000	60	60	21
	952154	1200	60	72	25
	952148	1200	300	360	126
	952160	1350	60	81	28
Sisalation® 450P Facing Foil Heavy Duty Standard (HDP)	952151	1200	300	360	130
	952163	1350	600	720	226
	952182	1350	60	81	30
	952178	1350	300	405	150
	952207	1500	600	828	247
	952198	1500	300	450	165
	952204	1500	600	900	282

*Next day delivery within branch metro areas.

Sisalation® Vapawrap™



Designed for: Use in colder regions as a vapour permeable membrane to manage condensation. Provides superior protection against damaging winds and heavy rain which can penetrate through exterior cladding and roofing material. Vapawrap™ and HomeWrap™ will keep bulk water out, allowing moisture vapour inside the structure to escape.

- ✓ Next day delivery service available*
- ✓ 10 year product warranty
- ✓ Satisfies Bushfire Attack Level (BAL) requirements of 0-40 in roof applications and 0-FZ in wall applications (in accordance with AS3959 – 2009)
- ✓ Light and easy to handle while exhibiting high strength and durability
- ✓ Provides in-built breathability and superior hold out to wind and water
- ✓ Greater heat shrink resistance compared to traditional polymer-weave based membranes
- ✓ Allows internal building works to commence once the roof has been installed; thereby allowing for expedited project completion
- ✓ Prevents bacteria and micro-organism growth

SISALATION
The Original and The Best

DuPont™
Tyvek
HomeWrap®

Hints

- Permeable Membranes are not designed to withstand prolonged weathering, hence the external cladding should be applied within 4 months of installation
- Sisalation® Vapawrap™ Metal Roof (Branz Appraised) is specially designed for use in metal roof applications and is typically laid over Permastop® Building Blanket
- Product must not be installed in areas where winds exceed 120kph
- Products are required to be fixed to studs at a minimum of 3.7 fixings/m² using staples, broad head screws or screws with washers

Q&A

Do Permeable Membranes have an R-value?

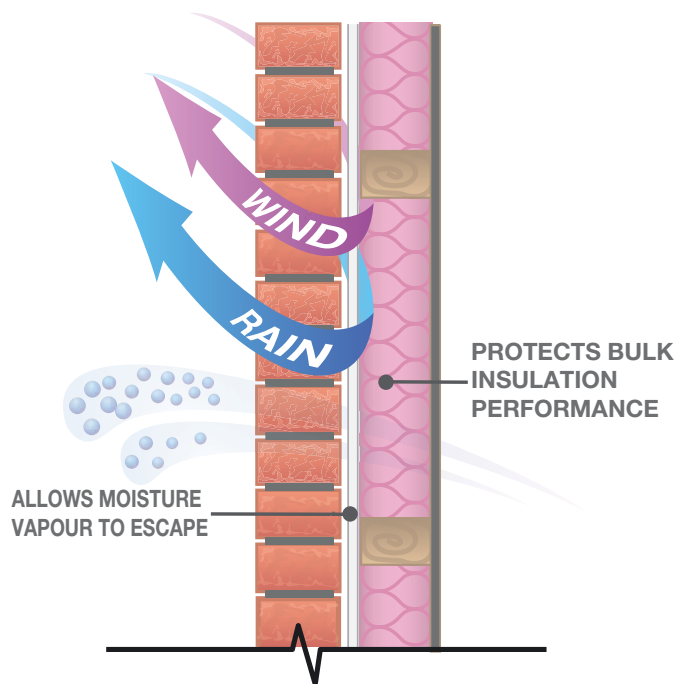
No; however, properly installed Permeable Membranes will help protect against loss of R-value in wall insulation due to wind washing. Even at wind speeds of 5mph, a wall without an air barrier retains less than 40% of its original installed R-values.

Can I use Permeable Membranes for under roof applications?

Sisalation® Vapastop™ Metal Roof is designed for use under metal roof constructions. It is typically installed over Permastop® Building Blanket protecting the insulation against wind washing and water penetration.

Install Example

Brick Veneer



BRANZ Appraised
Appraisal No.937 [2017]

*Vapawrap™ metal roof only

Product	Product code	Width mm	Length m	m ² per roll	Roll weight kg
Sisalation® Vapawrap™ Wall	395356	1350	30	40.5	4.8
Sisalation® Vapawrap™ Metal Roof (BRANZ Appraised)	395357	1250	40	50	11.1
Tyvek HomeWrap™	395121	2742	30	82	5.1
	395994	3048	30	91.4	5.6

Dupont®, Tyvek® and HomeWrap® are registered trademarks of Dupont (Australia) Ltd.

*Products are available for next day delivery for branches located within suitable climate zones. All other branches are subject to lead times.



Sisalation® Tuff Wrap™



Hints

- When installed adjacent to a minimum 20mm air space the reflective surface provides increased thermal performance and contributes to the overall energy efficiency of the building
- By overlapping and sealing with Vapastop® 883 aluminium tape, it provides the dwelling with an extra tough barrier against outside elements enabling the commencement of inside works such as plumbing, electrical and bulk insulation to commence immediately before construction of the outer skin has commenced
- Store in a cool dry place, away from alkaline corrosive materials such as concrete and lime

Q&A

What way do I install the wall wrap?

Wall wrap has an anti-glare blue facing which is installed facing outwards from the building to protect the installers eyes from the harsh rays of the sun.

How do you fix wall wrap to steel frame?

Use double sided tape or wafer head screws.

Designed for: Use as a wall wrap building membrane for timber and steel framed walls and gables which assists in minimising draughts enabling bulk insulation to perform more effectively. The 'Breather' variant is better suited for use behind permeable lightweight cladding such as fibre cement sheets, weatherboard and timber that are battened out from the structural frame†.

Made from: A layer of reflective foil bonded to a polymer-based weave.

- ✓ Next day delivery service available*
- ✓ 10 year product warranty
- ✓ Satisfies Bushfire Attack Level (BAL) requirements of 0-FZ in wall applications (in accordance with AS3959 – 2009)
- ✓ Designed to protect buildings by reflecting up to 95% of radiant heat
- ✓ Incorporates an anti-glare coating on one side for added installation safety
- ✓ Minimises the amount of moisture absorbed by the frame during construction
- ✓ Exceptional strength to weather and tearing

Install Example

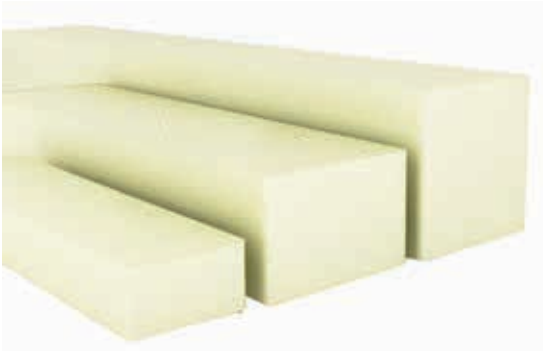


Product	Product code	Width mm	Length m	m ² per roll	Roll weight kg
Sisalation® 497 Tuff Wrap™ Standard	255088	1350	30	40.5	4.3
	255092		60	81	9
	255385	1500	30	45	4.7
Sisalation® 497 Tuff Wrap™ Breather	255089	1350	30	40.5	4.5
	255087		60	81	9
	255393	1500	30	45	4.7

† It is important that the cladding manufacturer's requirements are referred to when determining the suitability of Sisalation® 497 Tuff Wrap™ Breather.

* Next day delivery within branch metro areas.

FI XPS Foam Spacers



Designed for: Use in commercial metal roof system applications. The insulation spacer sits between the roof structure and the external cladding membrane to create the space required for insulation blanket to recover to its full nominal thickness between purlins.

Made from: High quality extruded polystyrene (XPS) Foam.

- ✓ 10 year product warranty
- ✓ Satisfies NCC, Section J Energy Efficiency Provisions
- ✓ High compressive strength properties
- ✓ Available in a range of heights to suit multiple Permastop[®] Building Blanket thicknesses
- ✓ 1200mm length to match typical Permastop[®] Building Blanket width, allowing for a direct line of sight to the purlin
- ✓ Provides excellent water resistance
- ✓ Excellent dimensional stability

Hints

- FI XPS Foam Spacers are available in various heights to suit most commonly used blanket thicknesses:
 - 25mm FI XPS Foam Spacers recommended for use with 55-60mm thick Building Blanket
 - 50mm FI XPS Foam Spacers recommended for use with 75mm thick Building Blanket
 - 75mm FI XPS Foam Spacers recommended for use with 100mm thick Building Blanket
 - 100mm FI XPS Foam Spacers recommended for use with 130mm thick Building Blanket

Q&A

What is the availability?

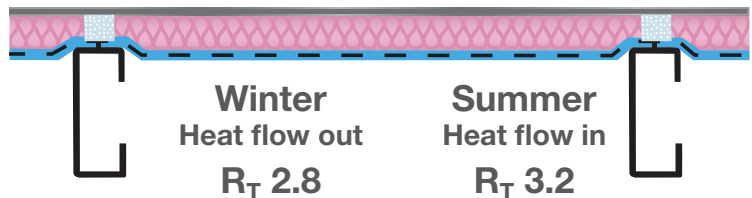
Available by special order, check your local branch for availabilities and lead times.

How much will it diminish the system R-value if a spacer is not used?

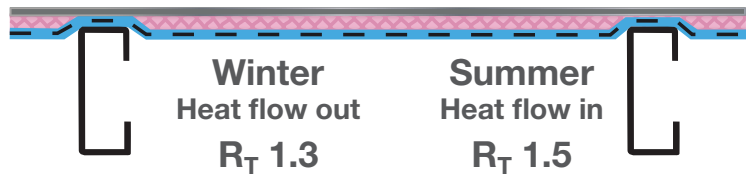
Failure to incorporate an insulation spacer into the design of a system can significantly compromise the thermal performance and thus energy efficiency of a building, diminishing the Material R-value of the insulation by up to 80%.

System Example

Flat Metal Roof with Spacer



Flat Metal Roof without Spacer



Flat metal roof at 0° to 5° pitch, safety mesh over purlins. 100mm Permastop[®] Building blanket faced with silver foil R2.5 laid over safety mesh, blanket allowed to recover to its nominal thickness by using 75mm FI XPS foam insulation spacer. Foil side of blanket should face into the airspace below.

Product code	Height mm	Width mm	Length mm	Unit
335060	25	75	1200	Each
335061	30	75	1200	Each
335062	40	75	1200	Each
335063	50	75	1200	Each
335064	75	75	1200	Each
335065	100	75	1200	Each

The colour PINK, Pink[®] and Pink[®] Batts are registered trademarks of Owens Corning and used under licence by Fletcher[®] Insulation Pty Limited.

Thermatape™ Thermal Break Strip



Designed for: Use to create a thermal break between the steel frame and the outer cladding material. As well as minimising heat leakage through metal window frames in a home when installed behind the window.

Made from: Crosslinked polyethylene and silicone coated paper with adhesive.

- ✓ 10 year product warranty
- ✓ High quality polyethylene structure
- ✓ Self-adhesive with peel off backing
- ✓ Achieves a material R-value of R0.2
- ✓ Suitable for use as a thermal break for steel framed constructions in accordance with NCC requirements
- ✓ Reduces the flow of thermal energy between conductive materials such as lightweight metal cladding and steel frames
- ✓ Excellent compression resistance
- ✓ User friendly, no protective clothing required

Hints

- Ensure surface is clean and free from dust and oil residue, clean with turpentine for best results before applying
- Can be easily cut down to requirement using a sharp retractable blade knife

Q&A

What is the availability?

Availability varies from next day delivery to 10 working days plus transit time. Consult your local branch for availability and lead times.

Install Example



Material R-value	Product code	Nominal thickness mm	Width mm	Length m
R0.2	318004	10	30	10

Vapastop[®] 883 Reinforced Foil Tape



Designed for: Use with Sisalation[®] products to create a vapour sealed joint.

Made from: Laminated polyethylene film, polyethylene fibre mesh and aluminium foil.

- ✓ Next day delivery service available*
- ✓ 10 year product warranty
- ✓ Strong reinforced tape
- ✓ Excellent fire retardant properties
- ✓ Pressure sensitive adhesive
- ✓ Conforms well to corners and irregular surfaces
- ✓ Hand tearable, can be torn across its width
- ✓ User friendly, no protective clothing required
- ✓ Operating service temperature range -15°C - 65°C

Hints

- Ensure surface is clean and free from dust and oil residue, clean with turpentine for best results before applying
- When taping joints, use a plastic squeegee to assist in applying an appropriate amount of pressure along the seam of the tape

Product code	Width mm	Length m	Rolls per carton
318039	24	50	48
318040	48	50	24
318080	63	50	16
318085	72	50	16
318086	96	50	12
318502	120	50	8
318501	144	50	8

Plain Foil Tape



Designed for: Use with Sisalation[®] products to create a vapour sealed joint.

Made from: Dead soft aluminium foil with synthetic rubber / resin on one side.

Product code	Width mm	Length m	Rolls per carton
318400	48	50	24
318405	72	50	16
318410	96	50	12

*Next day delivery within branch metro areas.

Tapes

Double Sided Cloth Tape



Designed for: Use with Sisalation® products to create a vapour sealed joint.

Made from: P.E. coated polyester, cotton cloth with synthetic rubber/resin on both sides.

- ✓ 10 year product warranty
- ✓ Pressure sensitive adhesive
- ✓ Allows for quicker installation methods
- ✓ Operating service temperature range 10°C - 65°C

Product code	Width mm	Length m	Rolls per carton
318050	24	23	36
318030	48	23	20

Sisalation® MD 440WF White Tape



Designed for: Use with Sisalation® White faced products to seal joints.

Made from: Laminated polyethylene film, bonded to paper with synthetic rubber/resin on one side.

- ✓ 10 year product warranty
- ✓ Pressure sensitive adhesive
- ✓ Conforms well to corners and irregular surfaces
- ✓ Broad operating service temperature range -5°C - 65°C

Product code	Width mm	Length m	Rolls per carton
318611	96	50	12

Black Tape



Designed for: Use with Sisalation® black faced products to seal joints.

Made from: Laminated polyethylene film, reinforced scrim, white inked finish with synthetic rubber/resin on one side.

- ✓ 10 year product warranty
- ✓ Strong reinforced tape
- ✓ Pressure sensitive adhesive
- ✓ Conforms well to corners and irregular surfaces
- ✓ Broad operating service temperature range -5°C - 65°C

Product code	Width mm	Length m	Rolls per carton
318349	48	50	24
318498	72	50	16

Roofing & Commercial Product Application Guide

 Denotes suitable applications and credentials.

Product	Applications													
	Type of Product					Locational Use					Vapour Barrier			
	Thermal	Acoustic	Reflective	Fire Control	Tapes	Thermal Break	Soffit / Underslab	Walls	Ceilings	Tile Roof	Metal Roof	Low	Medium	High
Permastop [®] Building Blanket														
Pink [®] Building Blanket														
Permastop [®] Tropic Building Blanket														
Permatuff Building Blanket														
Safety Mesh														
Roof Rack [®]														
Roof Razor [®]														
Fl XPS Insulation Foam Spacers														
Pink [®] Partition 11														
Pink [®] Partition 14														
Pink [®] Partition 24														
Pink [®] Partition 32														
Pink [®] Partition HD Panels 96														
Pink [®] Partition HD Panels 168														
Polyester Acoustic Partition Blanket														
Pink [®] NoiseSTOP [™] with Durasorb [®] Facing														
Pink [®] NoiseSTOP [™] Durasorb [®] Tape														
Pink [®] Thermal Slab														
PIRFORMATHERM [®]														
Loaded Vinyl Barrier														
Pipe Acoustic Lagging														
Sisalation [®] Foam Cell Multipurpose														
Sisalation [®] Foam Cell Shed Liner														
Sisalation [®] Bubble Cell														
Sisalation [®] Metal Roof														
Sisalation [®] Facing Foils														
Sisalation [®] Tuff Wrap [™]														
Sisalation [®] Vapawrap Metal Roof														
Sisalation [®] Vapawrap Walls														
Tyvek Homewrap [™]														
Thermatape [™] Thermal Break Strip														
Vapastop [®] 883 Reinforced Foil Tape														
Plain Foil Tape														
Double Sided Cloth Tape														
Sisalation [®] MD 440WF White Tape														
Black Tape														

Product	Credentials								
	Australian Made	Good Environmental Choice Australia (GECA)	Global-Mark ISO 9001	Global-Mark AS/NZS4859.1	Made from Recycled materials	FBS-1 Glasswool Bio-soluble Insulation	Zero Ozone Depleting	BAL 0-40 Compliant AS1530.1:1994	Non Combustible AS1530.1:1994
Permastop [®] Building Blanket									
Pink [®] Building Blanket									
Permastop [®] Tropic Building Blanket									
Permatuff Building Blanket									
Safety Mesh									
Roof Rack [®]									
Roof Razor [®]									
Fl XPS Insulation Foam Spacers									
Pink [®] Partition 11									
Pink [®] Partition 14									
Pink [®] Partition 24									
Pink [®] Partition 32									
Pink [®] Partition HD Panels 96									
Pink [®] Partition HD Panels 168									
Polyester Acoustic Partition Blanket									
Pink [®] NoiseSTOP [™] with Durasorb [®] Facing									
Pink [®] NoiseSTOP [™] Durasorb [®] Tape									
Pink [®] Thermal Slab									
PIRFORMATHERM [®]									
Loaded Vinyl Barrier									
Pipe Acoustic Lagging									
Sisalation [®] Foam Cell Multipurpose									
Sisalation [®] Foam Cell Shed Liner									
Sisalation [®] Bubble Cell									
Sisalation [®] Metal Roof									
Sisalation [®] Facing Foils									
Sisalation [®] Tuff Wrap [™]									
Sisalation [®] Vapawrap Metal Roof									
Sisalation [®] Vapawrap Walls									
Tyvek Homewrap [™]									
Thermatape [™] Thermal Break Strip									
Vapastop [®] 883 Reinforced Foil Tape									
Plain Foil Tape									
Double Sided Cloth Tape									
Sisalation [®] MD 440WF White Tape									
Black Tape									

© Fletcher Insulation 2017. Fletcher[®] Insulation reserves the right to change product specifications without prior notification. Information in this publication and otherwise supplied to users as to the subject product is based on our general experience and is given in good faith, but because of the many particular factors which are outside our knowledge and control and affect the use of products, no warranty is given or is to be implied with respect to either such information or the product itself, in particular the suitability of the product for any particular purpose. The purchaser should independently determine the suitability of the product for the intended application. The colour PINK, is a registered trademark of Owens Corning used under licence by Fletcher Insulation. Unless specified, all other [™] and © are trademarks or registered trademarks of Fletcher Insulation Pty Limited ABN 72 001 175 355.

Fletcher[®] Insulation

Building Better, Together.



03 5821 7277

Customer Service Phone

1300 654 444

Email info@insulation.com.au

www.insulation.com.au

