

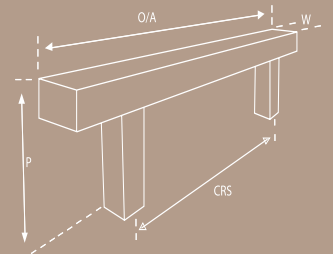
# CABINET HANDLES



- 102 Designer Handles
- 113 Aluminium Designer Handles
- 114 Designer Knobs
- 115 Economy Handles
- 116 Extrusions

#### Abbreviations

- CRS = Screw/Bolt Centres
- O/A = Overall Length
- W = Width
- P = Projection
- D = Diameter
- R/R = Recess Required



**NEW**

## Toorak

Finishes: BN & CP

DUE NOVEMBER 2015



Code	CRS	O/A	W	P
16050	128mm	139mm	11mm	32mm
16051	160mm	171mm	11mm	32mm
16052	192mm	203mm	11mm	32mm
16054	288mm	299mm	11mm	32mm
16057	416mm	427mm	11mm	32mm
16059	608mm	619mm	11mm	32mm

## Mosman

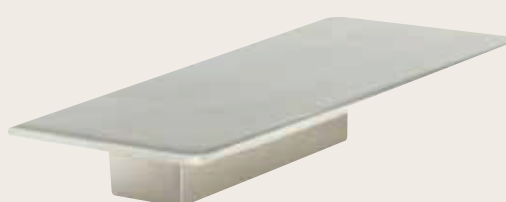
Finishes: BN & CP



Code	CRS	O/A	W	P
16030	128mm	142mm	7mm	35mm
16031	160mm	174mm	7mm	35mm
16032	224mm	238mm	7mm	35mm

## Tavola

Finishes: BN, OF



Code	CRS	O/A	W	P
6425	64mm	136mm	50mm	22mm

## Plato

Finishes: BN, OF

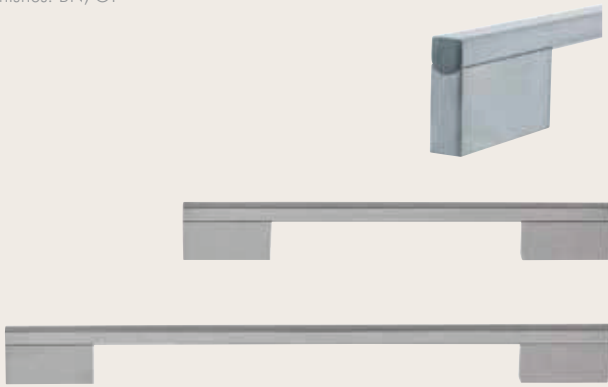


Code	CRS	O/A	W	P
6424	32mm	70mm	70mm	22mm

## Cabinet Handles > Designer Handles

### Pakello

Finishes: BN, OF

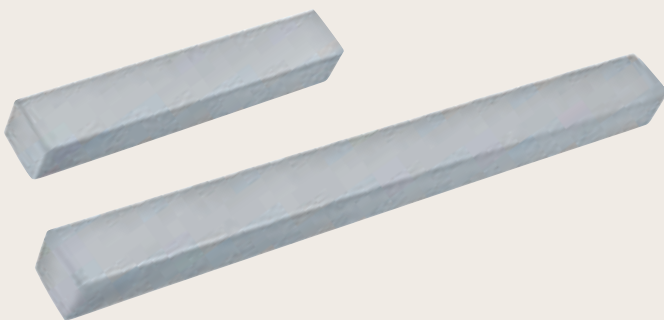


Code	CRS	O/A	W	P
6434	128mm	177mm	10mm	32mm
6435	160mm	209mm	10mm	32mm
6436	192mm	241mm	10mm	32mm
6437	288mm	337mm	10mm	32mm
6438	448mm	497mm	10mm	32mm
6439	640mm	689mm	10mm	32mm



### Monza

Finishes: BN, OF



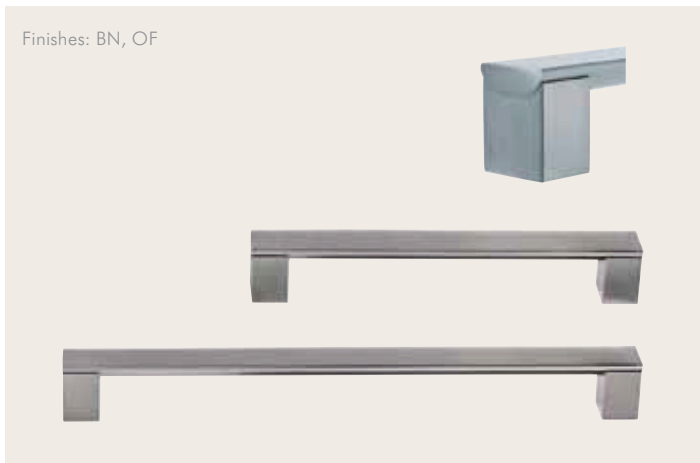
Code	CRS	O/A	W	P
6432	160mm	167mm	23mm	26mm
6433	320mm	327mm	23mm	26mm



## Cabinet Handles > Designer Handles

### Melo

Finishes: BN, OF

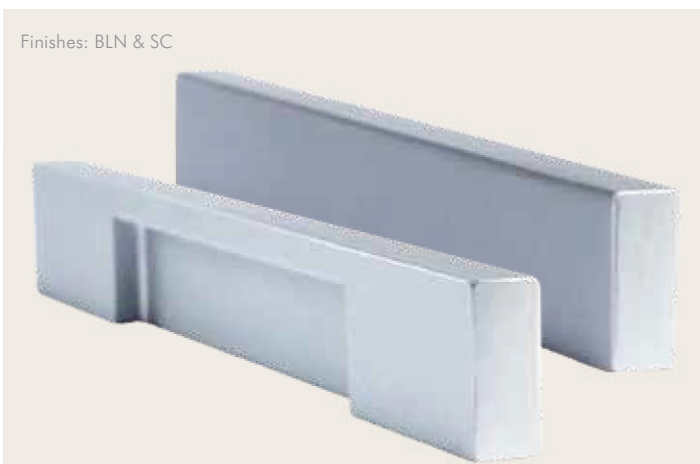


Code	CRS	O/A	W	P
6426	128mm	144mm	25mm	32mm
6427	160mm	176mm	25mm	32mm
6428	192mm	208mm	25mm	32mm
6429	288mm	304mm	25mm	32mm
6430	448mm	464mm	25mm	32mm
6431	640mm	656mm	25mm	32mm



### Prado

Finishes: BLN & SC



Code	CRS	O/A	W	P
6383	96mm	150mm	8.5mm	20mm



## Cabinet Handles &gt; Designer Handles

## Quadra

Finishes: BN &amp; OF

Code	CRS	O/A	W	P
16000	64mm	78mm	25mm	21mm
16001	96mm	110mm	25mm	21mm
16002	128mm	142mm	25mm	21mm
16003	160mm	174mm	25mm	21mm
16004	192mm	206mm	25mm	21mm
16005	224mm	238mm	25mm	21mm



## Milan

Finishes: BN &amp; OF

Code	CRS	O/A	W	P
16006	128mm	178mm	9mm	30mm
16007	160mm	210mm	9mm	30mm
16008	192mm	242mm	9mm	30mm
16015	288mm	338mm	9mm	30mm
16016	448mm	498mm	9mm	30mm
16017	640mm	690mm	9mm	30mm



## Melange

Finishes: BN &amp; OF

Code	CRS	O/A	W	P
16009	64mm	104mm	8mm	33mm
16010	96mm	136mm	8mm	33mm
16011	128mm	168mm	8mm	33mm
16012	160mm	200mm	8mm	33mm
16013	192mm	232mm	8mm	33mm
16014	224mm	264mm	8mm	33mm



# 106

 ZANDA  
ARCHITECTURAL HARDWARE



## Cabinet Handles > Designer Handles

### Minerva

Finishes: BN & SA

Code	CRS	O/A	W	P
6413	96mm	126mm	15.5mm	36mm
6314	128mm	158mm	15.5mm	36mm
6414	160mm	190mm	15.5mm	36mm
6315	192mm	222mm	15.5mm	36mm
6316	288mm	318mm	15.5mm	36mm
16026	320mm	350mm	15.5mm	36mm
6415	448mm	478mm	15.5mm	36mm
16025	544mm	574mm	15.5mm	36mm



### Loreto

Finishes: BN/SS

Code	CRS	O/A	W	P
6074	128mm	148mm	10mm	38mm
6075	192mm	212mm	10mm	38mm
6076	320mm	340mm	10mm	38mm
6392	448mm	468mm	10mm	38mm
6393	544mm	564mm	10mm	38mm
6394	640mm	660mm	10mm	38mm
6395	704mm	724mm	10mm	38mm



### Polo

Finishes: BN & SC

Code	CRS	O/A	W	P
6333	128mm	158mm	19mm	24mm
6334	160mm	192mm	21mm	24mm
6335	192mm	226mm	24mm	24mm



# 108



## Cabinet Handles > Designer Handles

### Dalkeith

Finishes: BN & SC



Code	CRS	O/A	W	P
6108	160mm	193mm	21mm	34mm

### Elro

Finishes: BN & SC



Code	CRS	O/A	W	P
6385*	192mm	200mm	22.5mm	20.5mm

### Mondo

Finishes: BN & SC



Code	CRS	O/A	W	P
6386	192mm	200mm	35mm	26mm

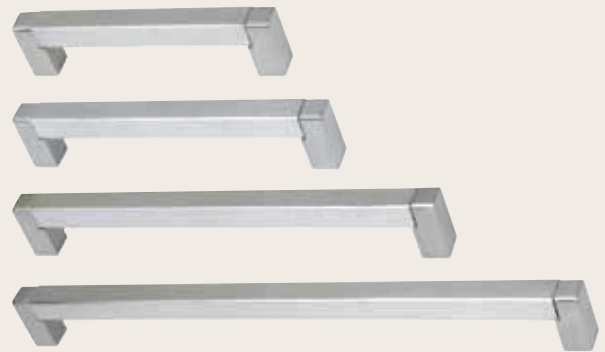


## Cabinet Handles > Designer Handles

### Monato

Finish:  
Bar- Stainless Steel  
Legs- Brushed Nickel

Code	CRS	O/A	W	P
6324	128mm	143mm	15mm	35mm
6325	160mm	175mm	15mm	35mm
6326	224mm	239mm	15mm	35mm
6327	320mm	335mm	15mm	35mm



### Sincro

Finishes: BN & SC

Code	CRS	O/A	W	P
6067*	64mm	72mm	12mm	27mm
6068	96mm	104mm	12mm	27mm
6069	128mm	136mm	12mm	27mm
6396	160mm	168mm	12mm	27mm
6397	192mm	200mm	12mm	27mm
6398	288mm	296mm	12mm	27mm
6399	448mm	456mm	12mm	27mm



### Mitred D Pull

Finish: SS

Code	CRS	O/A	W	P
6071	96mm	108mm	12mm	30mm
6072	160mm	172mm	12mm	30mm
6073	288mm	300mm	12mm	30mm
6387	320mm	332mm	12mm	30mm
6388	448mm	460mm	12mm	30mm
6389	544mm	556mm	12mm	30mm
6390	640mm	652mm	12mm	30mm
6391	704mm	716mm	12mm	30mm



# 110

ZANDA  
ARCHITECTURAL HARDWARE



Project: City Square - Perth  
Product: 6340 Marco Handle



## Cabinet Handles &gt; Designer Handles

## Marco

Finish: BN &amp; SC

Code	CRS	O/A	W	P
6336	96mm	122mm	8mm	26mm
6337	128mm	157mm	8mm	26mm
6338	160mm	193mm	8mm	26mm
6339	192mm	225mm	8mm	26mm
6340	240mm	273mm	8mm	26mm
6382	320mm	356mm	8mm	28mm



## Marco Nero

Finish: BLK

Code	CRS	O/A	W	P
6336	96mm	122mm	8mm	26mm
6337	128mm	157mm	8mm	26mm
6338	160mm	193mm	8mm	26mm
6339	192mm	225mm	8mm	26mm
6382	320mm	356mm	8mm	28mm



## Cabinet Handles > Designer Handles

### Recessed Handles

Finish: BN



Code	CRS	O/A	R/R
6110	128mm	153mm	11mm

### Metro

Finish: BN



Code	CRS	O/A	W	P
6351*	128mm	168mm	10mm	35.5mm
6352*	160mm	200mm	10mm	35.5mm
6353*	192mm	232mm	10mm	35.5mm
6354*	288mm	328mm	10mm	35.5mm
6355*	448mm	488mm	10mm	35.5mm

### Rialto

Finishes: BN & SC



Code	CRS	O/A	W	P
6341	16mm	39mm	21mm	19.5mm

### Anglo

Finishes: BN & SC



Code	CRS	O/A	W	P
6345	16mm	25mm	25mm	20.5mm

### Tezo

Finishes: BN & SC

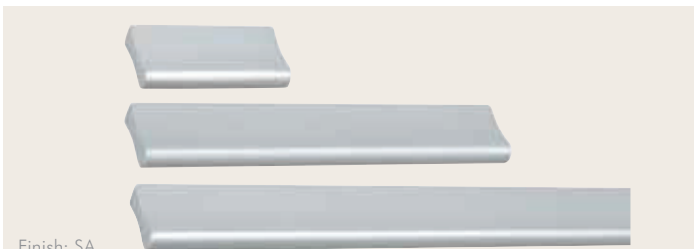


Code	CRS	O/A	W	P
6384	32mm	40mm	10mm	20mm

\*Discontinued, limited stocks available

## Cabinet Handles > Designer Handles - Aluminium

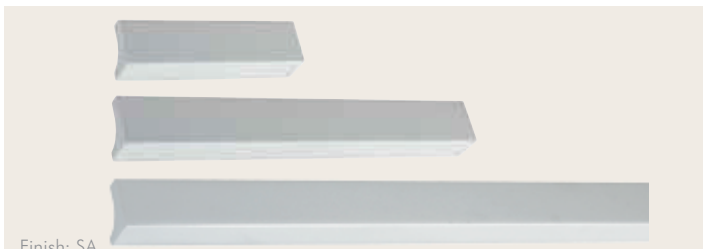
### Roseto



Finish: SA

Code	CRS	O/A	W	P
6082	32mm	45mm	8mm	20.5mm
6083	96mm	120mm	8mm	20.5mm
6084	192mm	230mm	8mm	20.5mm

### Verbano



Finish: SA

Code	CRS	O/A	W	P
6328*	64mm	80mm	15mm	20mm
6086*	128mm	160mm	15mm	20mm
6329*	288mm	360mm	15mm	20mm

### Sebino



Finish: SA

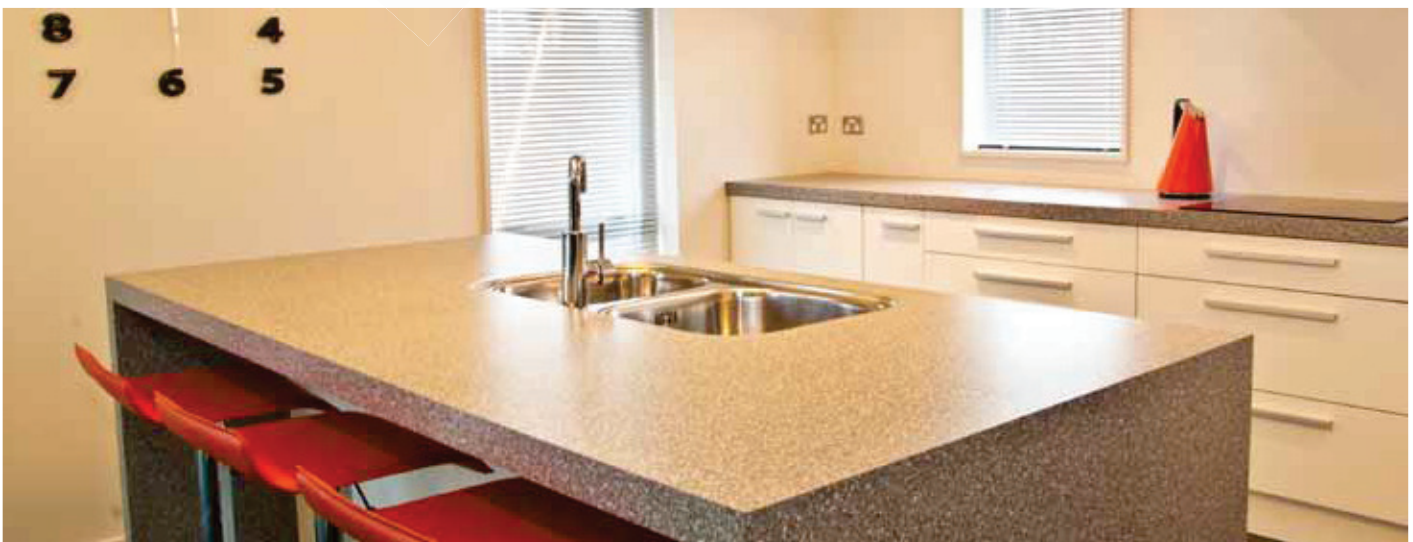
Code	CRS	O/A	W	P
6079*	64mm	84mm	12mm	24mm
6080*	128mm	148mm	12mm	24mm

### Mimosa



Finish: SA

Code	CRS	O/A	W	P
6322	224mm	234mm	16mm	43mm
6323	288mm	298mm	16mm	43mm



\*Discontinued, limited stocks available

## Cabinet Handles > Designer Knobs



### Ball Knob

Finish: BN



Code	D	P
6064	30mm	32.5mm

### Cone Knob

Finish: BN & SC



Code	D	P
6061	22mm	20.5mm
6062	28mm	26mm

### Lip Pull

Finish: BN



Code	O/A	W	P
6149	19mm	52mm	18mm

### Button Knob

Finish: BN



Code	D	P
6300	32mm	121mm



### Crystal

Finish: CP



Code	D	P
16046	30mm	42mm

### Knightsbridge

Finish: SA



Code	D	P
6087	15mm	22.5mm
6088	25mm	30.5mm

### Teardrop

Finish: BN



Code	O/A	W	P
6045*	18mm	33mm	21mm

\*Discontinued, limited stocks available

## Cabinet Handles > Economy Handles

### D-Handles

Finishes: SC, SS



Code	CRS	O/A	W	P
6520	76mm	86mm	10mm	34mm
6006	96mm	106mm	10mm	34mm
6100	128mm	138mm	10mm	34mm
6521	224mm	234mm	10mm	34mm
6522	320mm	330mm	10mm	34mm
6523	448mm	458mm	10mm	34mm
6524	512mm	522mm	10mm	34mm

### Rolled

Finish: BN



Code	CRS	O/A	W	P
6041	96mm	168mm	22mm	18mm

### Slimline Bow Handles

Finishes: SC, BN



Code	CRS	O/A	W	P
6500	64mm	79.5mm	9mm	25mm
6501	96mm	108mm	9.5mm	25.5mm
6502	128mm	148mm	10mm	26mm
6503	160mm	181mm	10.5mm	26.5mm
6504	224mm	251mm	11mm	27mm

Fantastic Price.  
Enquire Now

### Bar Handles

Finishes: BN, SC, SS



Code	CRS	O/A	W	P
6517	64mm	104mm	12mm	32mm
6047	96mm	136mm	12mm	32mm
6101	128mm	168mm	12mm	32mm
6048	160mm	200mm	12mm	32mm
6055	192mm	232mm	12mm	32mm
6518	224mm	264mm	12mm	32mm
6049	288mm	328mm	12mm	32mm
6102	320mm	360mm	12mm	32mm
6519	384mm	424mm	12mm	32mm
6103	448mm	488mm	12mm	32mm
6104	544mm	584mm	12mm	32mm
6105	640mm	680mm	12mm	32mm

Fantastic Price.  
Enquire Now

### Bow Handles

Finish: SC



Code	CRS	O/A	W	P
6510	96mm	120mm	10mm	30mm
6511	128mm	162mm	10mm	31mm
6512	160mm	192mm	10mm	32mm
6513	192mm	223mm	10mm	33mm
6514	224mm	273mm	10mm	34mm
6515	256mm	311mm	10mm	35mm
6516	288mm	350mm	10mm	36mm

Great Deals  
Available

**NEW**

## Modena

MID MOUNT



TOP MOUNT



**FEATURES:**

- Rear fitting so you save time and money
- Location scribes for easy drilling
- 2500mm lengths can be quickly and easily cut to length

**Top Mount:**

- 6824: To suit 16mm board
- 6825: To suit 18mm board

**Mid Mount:**

- 6826: To suit 16mm board
- 6827: To suit 18mm board

Finishes: SA, PC

